

THINKING

AHEAD



# Envision the Future

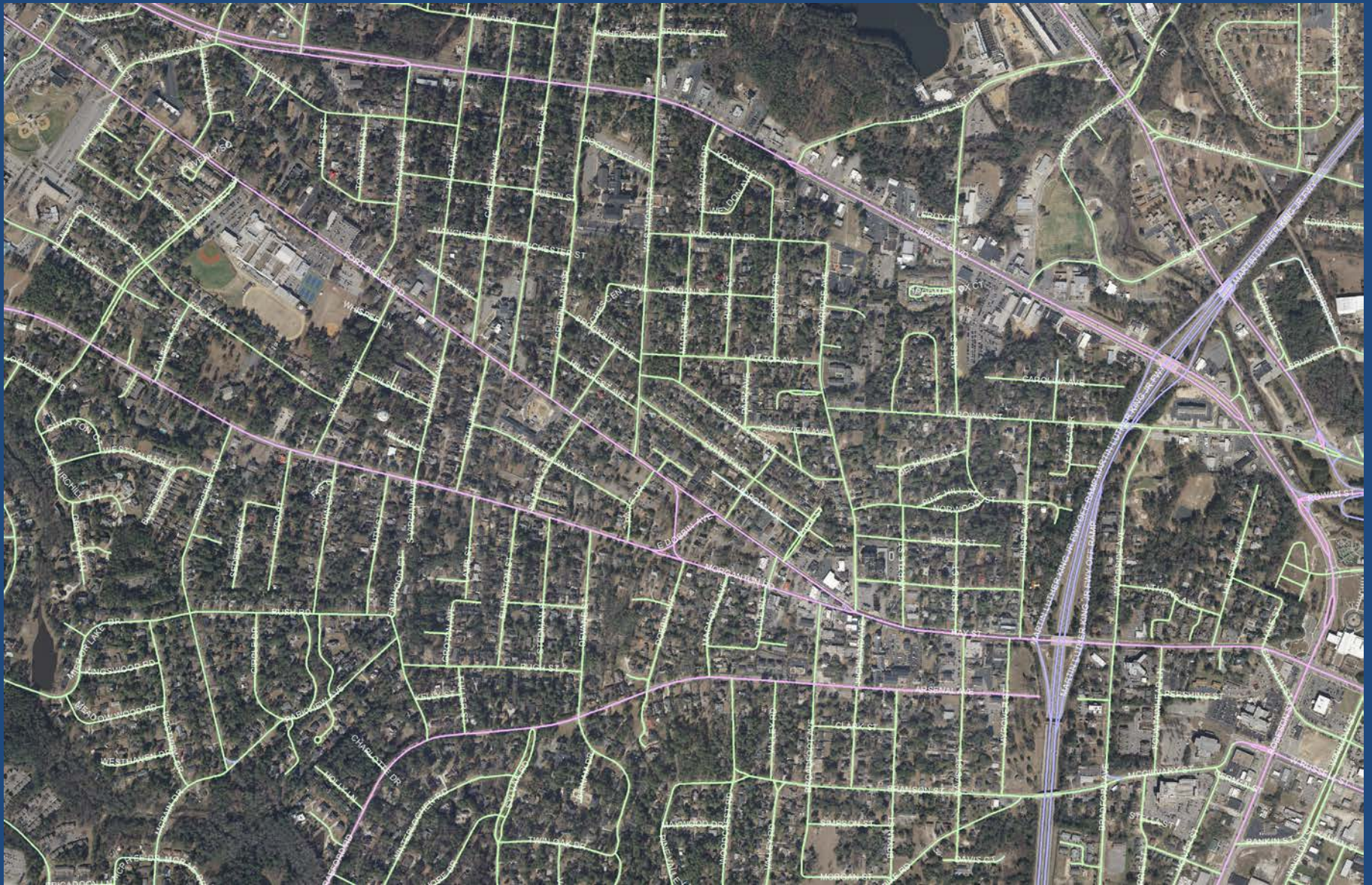
STAKEHOLDER'S MEETING #1

June 23, 2016



- How do you refer to this area?





- What should be the study area boundaries?

- What about the commercial center?  
What do you call it?
- How do you get there?





Google earth

Image NASA

Fort Bragg Rd

Oakridge Ave

1404

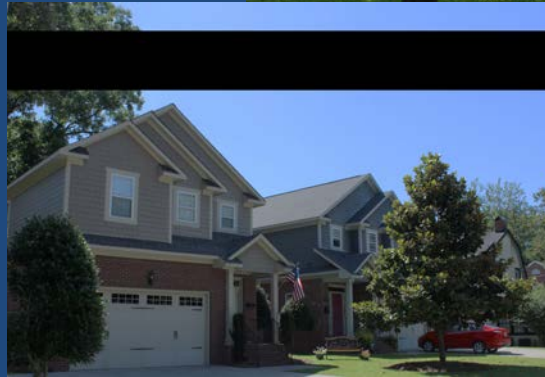
Hay St



- Where do you go?



# Neighborhoods & Housing





- What is Great?
- What is Missing?



- What Works?
- What does Not Work?
- What are your Favorite Places?
  
- What about the Future?





## MASTER PLAN

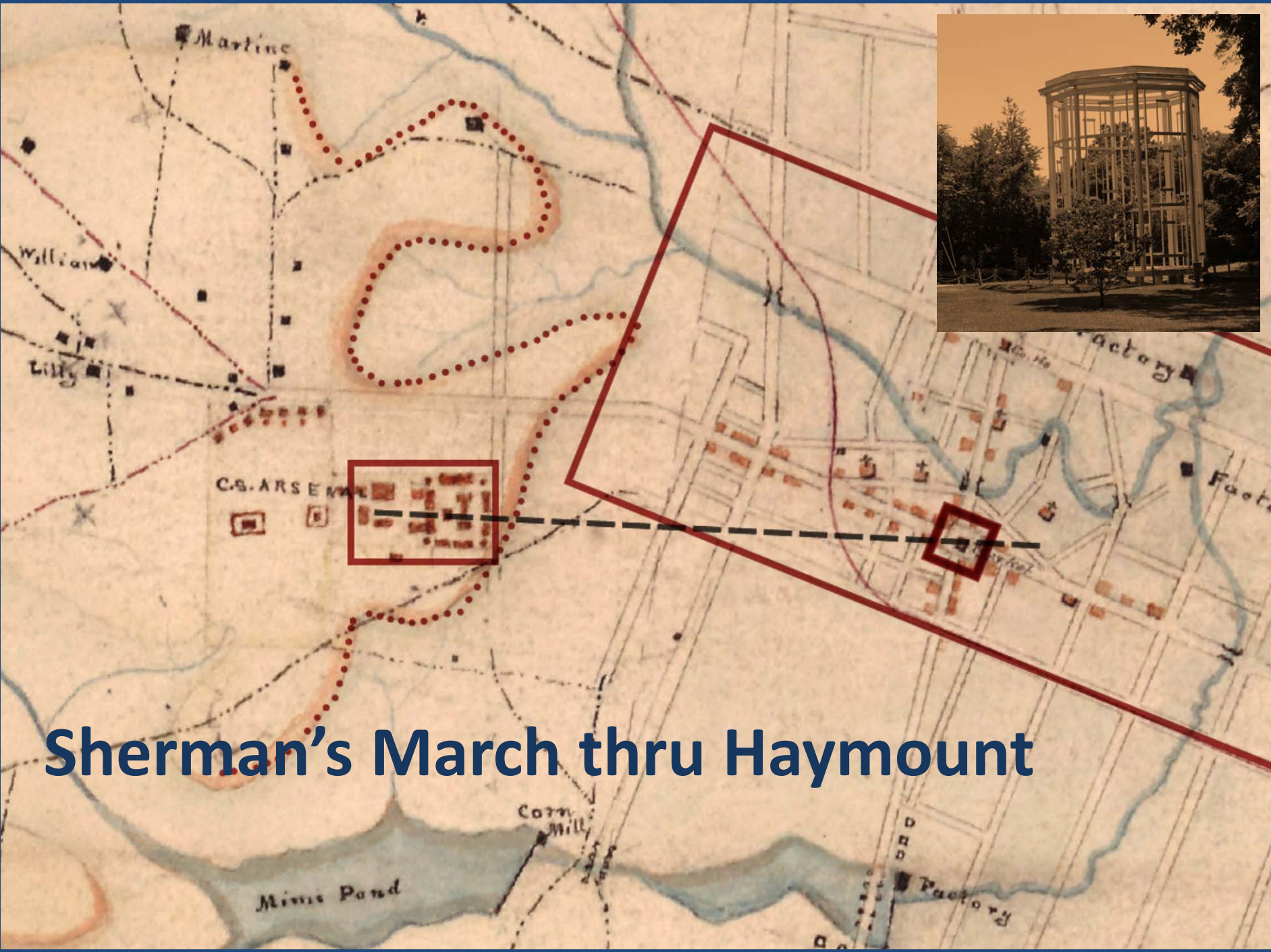
### MUSEUM, ARSENAL PARK + HISTORIC HOUSES

This aerial rendering shows the elements of the Master Plan once built.

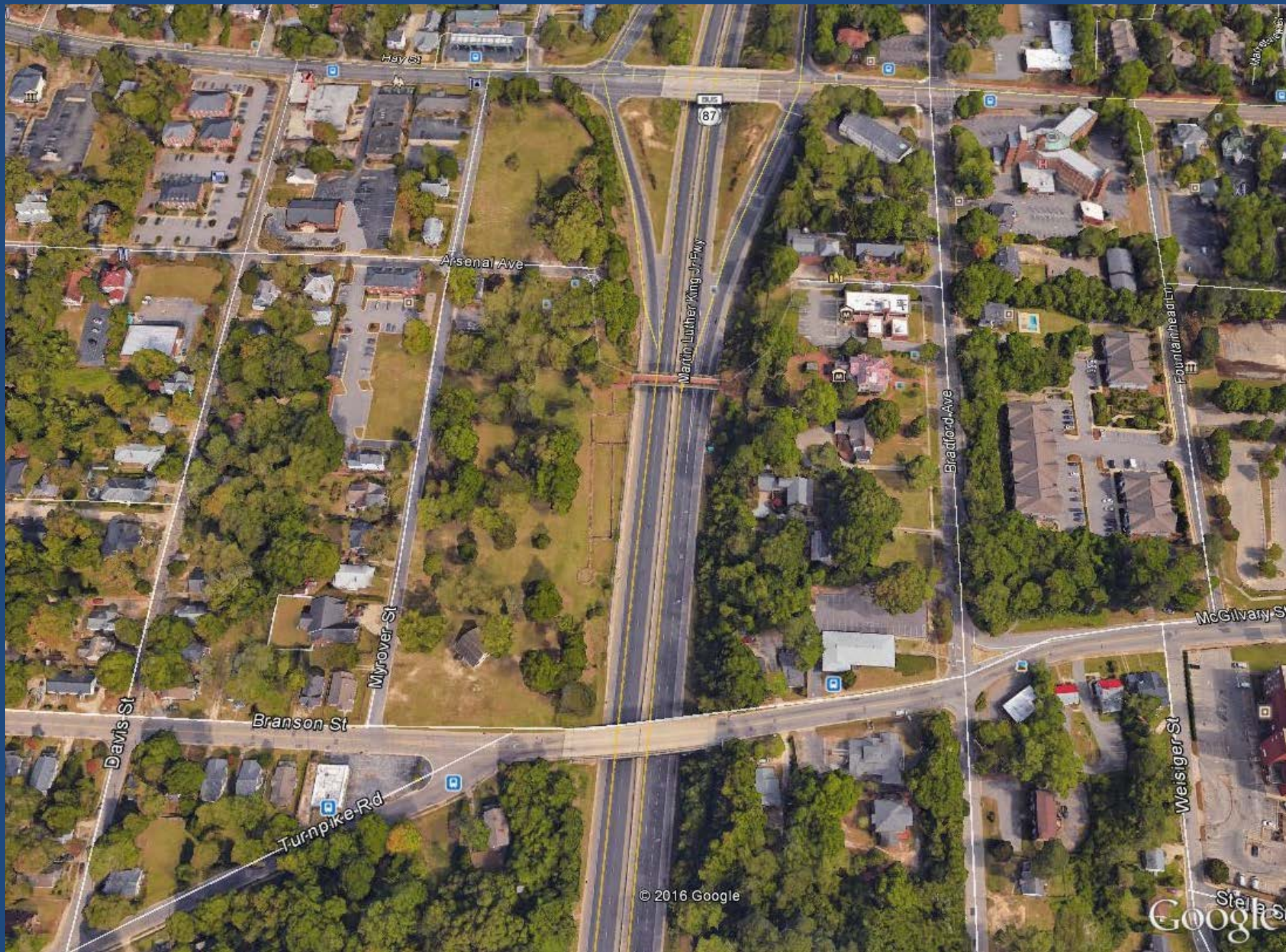
- 1 - ENTRY / MAIN PARKING LOT
- 2 - PEDESTRIAN BRIDGE
- 3 - PLAZA / OUTDOOR EVENT SPACE
- 4 - MUSEUM
- 5 - ARSENAL RUINS WITH BOARDWALKS
- 6 - PICNIC SHELTER
- 7 - HISTORIC HOUSES
- 8 - SOUTHERN PARKING LOT
- 9 - POE HOUSE



# Proposed Civil War History Center



# Sherman's March thru Haymount



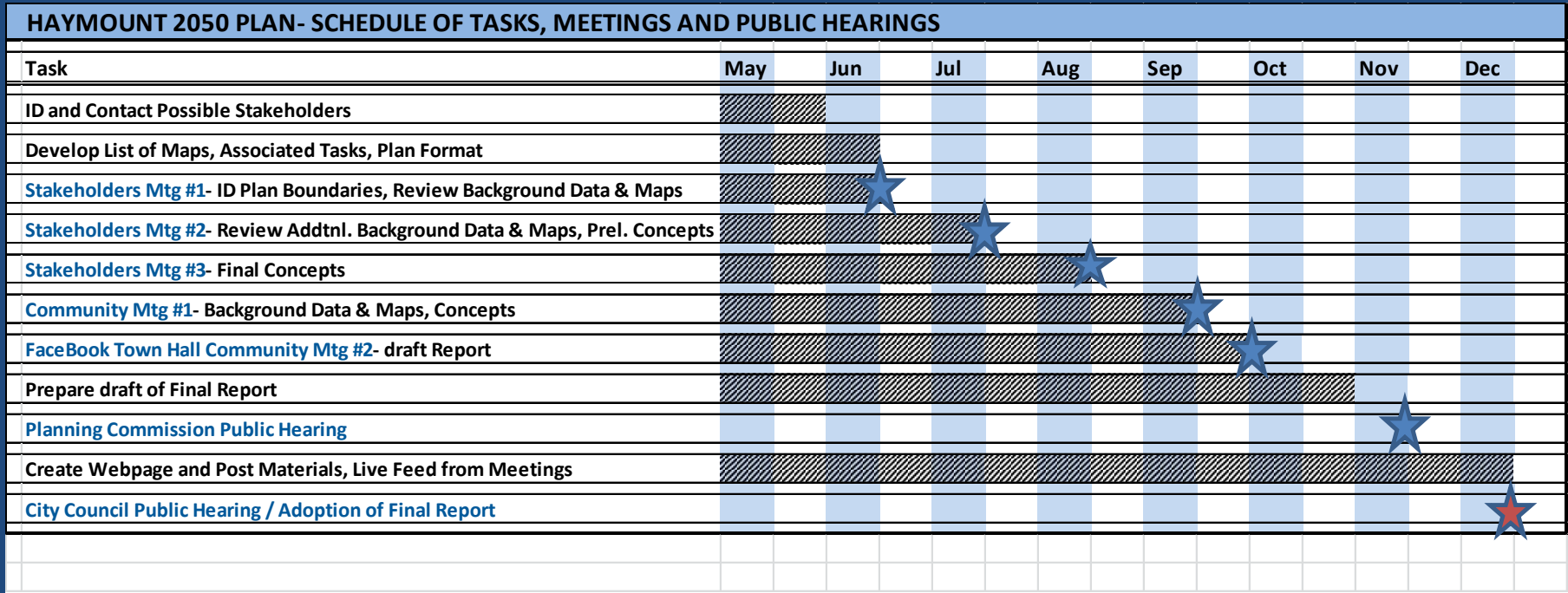


**Myrover Street looking south  
from Arsenal St**

# Future Impact

- Annual visitation expected at 105 – 130 K
- Annual projected direct on- & off-site expenditures of \$5 million +
- How do we compel visitors to stay and discover the history in Haymount & DT and capture \$\$'s? Ideas?

# What about additional Stakeholders?



Schedule & Next Meeting Date(s)?

# ASSIGNMENT:

- What makes a place walkable? List a half a dozen things that come to mind...
- What would it take to compel you to walk?
- After you give it some thought, see how your list compares to the data at <http://www.walkable.org/>

