

DOWNTOWN FAYETTEVILLE

01.18.2017

MINOR LEAGUE BASEBALL STADIUM / ENTERTAINMENT VENUE

POPULOUS® + sfl+a
ARCHITECTS

PROGRESS REVIEW

PROGRAM

PART 1: SPECTATOR FACILITIES

Space Type	Room Description	Units	SF	Total SF	Astros wish	Original SF	Comments	
Spectator Seating	Bowl Seating- Reserved (21'-20" Seat); 36" tread width	3,339	5.5	18,365		13,129		
	Bowl Seating- Loge Box seating (rolling chairs); area to be a min of 8' clear drink rail to serving counter	48	24.0	1,152		1,152	Concourse suites (2- 24 ea)	
	1st Base Seating - four topps	96	12.0	1,152		6,000	1/2 round tables	
	3rd Base Seating- Left field field boxes	64	12.0	768		4,800	terrace deck (high tops)	
	Outfield Berm Seating	182	10.0	1,820		4,560	LF (10sf/person)	
	Outfield Park Seating	50	15.0	750		750	drink rail	
	RF Grass Seating	310	10.0	3,100		3,960	RF (10sf/person)	
	LF Bar	18					drink rail only, add for sitting at bar..	
	Outfield Group Sales Cabanas	64	9.0	576		576	4 units of 16	
	SRO	300	6.3	1,875		3,125	2 deep (sf count into concourse sf)	
	ADA	54	15.0	810			sf included in concourse sf	
	Total Lower Bowl		4,525		27,683		34,927	
	Suite Level Group Sales Areas- party deck	94	25.0	2,350		1,602	20 at drink rail and 74 at deck	
	Suite Level Group Sales Areas- party deck exterior fixed seating	56	11.0	616		616	21" fixed chairs	
	Suite Level Club - club seats -21" padded chairs, 42" tread	98	11.6	1,137		1,276	3 rows of fixed	
	Suite Level - Exterior seating for suites; 22" fully padded, high back	72	16.0	1,152		1,280	2 rows of fixed and drink rail	
	Suite Level Total		320		5,255		4,774	
	Total Seat Count		4,845		32,937		39,701	
		<i>Note: accommodations for wheelchair and ambulatory disabled patrons and their companions shall be provided in accordance with the ADA.</i>						all chairs to have cup holders
	Stadium Suites/Club	Luxury Suites: A total of 6 suites shall be provided; with 12 exterior fixed seats, and 4 interior drink rail w/ stool seats, 2 suites of these to have connecting doors between to expansion to larger party suite						Flat screen TV's, 6' of base and wall cabinetry; bar sink with disposal unit; under-counter refrigerator (glass front), induction cook top (2), bin for ice shall be provided.
a. Regular Suites:		6	558	3,348		3,348	fixed door and sliding front glass wall	
b. Stadium Club (Lounge)		1	3,500	3,500	3,500	5,820	accommodate 100 people	
c. Stadium Club (Lounge) Storage		1	250	250	500	460		
d. Party Deck	1	1,600	2,350		1,602	capacity of 150		
Public Toilet Rooms	Public toilet facilities will be provided based on an assumed ratio of 50:50 male-female attendance. <i>Note: the</i>							
	A. Concourse Level Public Toilet Rooms:							
	1. Men's toilets:	26.35416667	84	2,214		2,230	Total number of water closets and urinals required: 1 per 75 for the first 1,500 and 1 per 120 for the remainder exceeding 1,500. (Table 403.1)	
	2. Women's toilets:	43.85416667	63	2,763		2,775	1 per 40 for the first 1,500 and 1 per 120 for the remainder exceeding 1,500.	
	3. Family Toilet Rooms: <i>Will be provided for use by parents with small children or disabled people who need special assistance.</i>	1	80	80	2 - 80 ea	80		
	B. Suite Level Toilet Rooms:							
	1. Men's toilets:	2.133333333	184	393		411		
2. Women's toilets:	4	104	416		436			
C. Drinking Fountains	6							
SUB-TOTAL (NET AREA)				45,900		55,261		

PART 2: CONCESSION FACILITIES

Space Type	Room Description	Units	SF	Total SF			
Concession Stands	Concession Stands will be distributed at regular intervals on the Concourse(s).						
	a. Fixed (Main) are based 60% of total seat capacity; ratio of 1:200 spectators; Points-of-Sale:	14	283	3,842	5,173	Total for portable and fixed - POS to be 1/200 ratio	<i>Note: pba recommends 1:350</i>
	b. Portable carts (Main) based on 40% of total seat capacity: ratio 1/200	9	0	0	0	min power supply of 150amp 120/208 service per fixed concession stand	<i>Queue space 15 stations per fixed; 3 digital bds per stand; integrated</i>
	c. Concession Office	1	0	0	0	Included in commissary	<i>Up to 8 outlets behind OF wall; WIFI access points at all concession areas, throughout stadium</i>
	d. Suite Bar	1	200	200	440		
	e. Permanent Bar at Main Concourse	1	400	400	2,000	beer, wine, liquor sold	<i>0 in HKS</i>
Kitchen/ Pantry	a. Central Kitchen serving concessions stands and suites	1	620	620	1,000		
	b. Commissary: centralized bulk storage for paper goods and food supplies, including climate-controlled storage rooms; next to loading area.	1	1,820	1,820	2,750	includes - 150sf ice production, 150 washing, 600 receiving, 160 walkin freezer, 300 walkin refrig, 300 dry storage	<i>warehouse with a roll up door back side</i>
	c. Suite Pantry on the Suite Level	1	600	600	1,280	includes 200 for pantry and 400 for storage	
	a. Administrative Office	1	100	100	0		
	b. Money Room	1	0	0	0	Included in commissary	
	c. Entry Corridor; main entrance for employees.	1	0	0	0	Included in commissary	
	d. Employee Locker Area	1	120	120	0	20 small lockers (12x12), included in commissary	
	e. Staff Office area; sales cubicles.	6	0	0	0	Included in commissary	
	Total			220			
Vendor Commissary	a. Vendor Commissary	1	200	200	560	include in each concession stand utility services providing water and electricity or stand alone	
SUB-TOTAL (NET AREA)				7,902		13,203	

PART 3: CONFERENCE FACILITIES								
Space Type	Room Description	Units	SF	Total SF				
Conference	Located on-site or adjacent street							
	a. Conference Room	0	15	0			0	
	b. Toilets- Men	0	75	0			0	
	c. Toilets- Women	0	75	0			0	
	d. Kitchen	0	500	0			0	
	e. Pantry	0	250	0			0	
SUB-TOTAL (NET AREA)				0			0	
PART 4: SPECTATOR AMENITIES								
Space Type	Room Description	Units	SF	Total SF				
Retail Sales	a. Permanent retail store	1	1,000	1,000	2,500	2,400	connected to executive offices, includes 100sf for an office	
	b. Remote retail (with Roll up door)	0	0	0				
	c. Storage for retail store	1	350	350	1,500	1,000		
	d. Long term retail and promotions storage	0	0	0				
First Aid/Security	a. First Aid Station/Security - for emergency medical treatment (<i>shares toilet with security</i>)	1	220	220	300 combo	550	<i>includes 80sf for an toilet</i>	
Ticket Office	a. Box Office No. of Ticket Windows: 3; 1 will call, 2 game day sales	1	520	520	400	260	6 wdws original program, includes 290sf ticketing, 120sf cash	
	b. Office for Ticket Manager	1	130	130	150	150		
	c. Office for Ticket Manager extra office	1	0	0	150	150		
	d. Extra Office	1	100	0	100	100		
	e. Ticket Storage/ Vault	1	100	100	200	100	Vault/Cash room opens in ticket office; safe size- roll top 24x24x72	
Customer Service	a. Customer Service Window	1	150	150	100	140		
	b. ATM	2			2		2 minimum	
SUB-TOTAL (NET AREA)				2,470			4,850	
PART 5: CIRCULATION								
Space Type	Room Description	Units	SF	Total SF				
Concourses	a. Main Level Concourse	1	55,000	55,000		65,025	25' width	<i>HKS showed 29000sf delta of 26,000sf</i>
	b. Service Level Corridor	1	3,660	3,660		3,660		
	c. Suite Corridor	1	1,200	1,200		1,400		
Lobbies	a. Passenger Elevator Lobbies	1	320	320		325		
	b. Freight Elevator Lobbies	1	320	320		325		
Vertical Circulation	a. Passenger Elevators: 1	1	80	80		80	Passenger and freight to all levels.	
	b. Freight Elevators: 1	1	86	86		86		
Stairs	a. Stairs to suite level	3	240	720		240		
	b. Main Stair	2	500	1,000		500		
Entry Plazas	a. Standard concrete pedestrian paving on grade	1	3,000	3,000		10,000		
SUB-TOTAL (NET AREA)				65,386			81,641	

PART 6: PLAYER and OFFICIALS FACILITIES							
Space Type	Room Description						
		Units	SF	Total SF			
Home Team Clubhouse	The Home Team clubhouse includes the following spaces:						
	a. Team Locker Room - (35) wood lockers	1	1,200	1,200	2,000	2,000	35 lockers- 42"x30"x84"
	b. Player Lounge	1	300	300	0	0	with counter, 2 ref, sink
	c. Toilet room	1	630	630	450	450	4 lavs, 2 urinals, 2 wc
	d. Drying room	0	0	200	200	200	included in toilet room
	e. Showers (8 shower heads)	0	0	425	425	425	included in toilet room
	f. Manager's Office	1	120	120	300	300	desk, chair, cabinets, 2 guest chairs;
	g. Managers Toilet/Shower	1	0	0	100	100	
	h. Coaches Locker Room - (8) wood lockers	1	450	450	500	500	8 lockers- 42"x30"x84", includes mgr, coaches and meeting room
	i. Coaches Shower and Toilet	1	250	250	300	300	2 w.c., 2 u., 2 lavs, 3 shower heads; includes mgr shower and toilet
	j. Coaches Conference Room	0	300	0	300	300	included in coaches locker area
	k. Video Coaching Room	0	300	0	300	300	
	l. Equipment Storage Room	1	300	300	1,200	1,200	
	m. Baseball Storage Room	0	120	0	120	120	
	n. Equipment Manager Office	0	120	0	120	120	
	o. Laundry	1	360	360	450	450	2-50# washers, 2- 75# dryers, utility sink and closet, 10lf counter tops; adjacent to Equipment Storage
	p. Clubhouse Managers Office	1	0	0	120	120	
	q. Pantry Food service	0	450	0	450	450	
	r. Family Lounge	0	300	0	300	300	
	s. Family Lounge Toilet	0	80	0	60	80	
	t. Mascot Room /Storage	0	150	0	150	150	
u. Weight Room	1	1,000	1,000	1,000	1,000		
v. Strength coach office	0	150	0	150	150		
w. Kitchen	1	0	0		300		
x. Custodial	1	25	25	50	100		
y. Circulation (10% of net area)	0.1	6,605	661		1,562		
	Total			5,921		10,977	
Training Room	a Treatment Room	1	600	600	500	500	2 training tables; would like an island with storage, view into weight room, incl in home team clubhouse
	b. Hydrotherapy	0	600	0	600	600	included in training room
	c. Training Office	0	300	0	300	300	
	d. Exam room	0	100	0	100	100	
	e. Toilet/Shower	0	150	0	150	150	
	f. Ice Machines	0	0	0		0	1 cuber, 1 flaker; in treatment room
	Total			600		1,650	
Tunnels	a. 2 Batting and Pitching Tunnel- Indoor	2	2,375	4,750		4,750	Batting Tunnel accessible by both clubhouses.
	b. Field Access Tunnel- Visitor	0	400	0		0	
	c. Field Access Tunnel- Home	1	400	400		400	
	Total			5,150		5,150	
Visitor Team Clubhouse	The Visitor's Clubhouse includes the following spaces:						
	a. Team Locker Room - (28) 30"x30" wood lockers + (2) 42"x30" catchers lockers	1	1,000	1,000	1,000	1,000	min space for 30 lockers; (28) 30"x30" lockers + (2) 42"x30" lockers
	b. Showers and toilets (2 w.c., 2 u., 4 lavs, 8 shower heads)	1	560	560		400	
	c. Manager's Office and Locker Room	0	200	0		200	
	d. Coaches Locker Room - (6) 30"x30" wood lockers	1	225	225		300	manager/coaches office/lockers
	e. Coaches & Manager's Showers and Toilet (1 w.c., 1 u., 2 lavs., 2 shower heads)	1	225	225		250	
	f. Training Room (includes wet area)	1	200	200	400	400	hydrotherapy included
	g. Equipment Storage Room	1	0	0	100	100	
	h. Custodial	1	50	50	50	100	
	i. Circulation (10% of net area)	0.1	2,460	246		2,750	
Total			2,506		5,500		

Auxiliary Locker Room (Multi Purpose)	a. Team Locker Room - (30) 30"x30" metal lockers	0	345	0	1,000	345	
Miscellaneous Spaces	a. Serving Kitchen	0	200	0	200	200	
	b. Player Interview Room	0	200	0	200	200	
	c. Press Conference Room	0	500	0	500	500	
	d. Trainers Cart Storage	0	120	0	120	120	indoor storage for trainers elect cart
	e. MLB Parent Team Storage	0	300	0	300	300	
Officials' Lockers	The officials locker room includes the following:						
	a. (4) 36"x30" wood lockers	1	250	250	300	430	
	b. Shower & Toilet Room (1 w.c., 1 u., 2 shower heads)	1	200	200	200	250	
	c. (2) 36"x30" wood lockers	1	150	150	300	430	
	d. Shower & Toilet Room (1 w.c., 1 u., 2 shower heads)	1	200	200	200	250	
	Total			900		3,025	
SUB-TOTAL (NET AREA)				14,977		26,302	
PART 7: ADMINISTRATION							
Space Type	Room Description	Units	SF	Total SF			
Administrative Offices	Facilities for stadium and team administration will be located in this facility.						
	a. Office 1 - General Manager's Office	1	210	210	400	400	
	b. Individual offices	4	240	960	2,000	2,000	
	c. Support Staff -Open Workstations.	1	1,000	1,000	1,000	1,455	Cubicles for 4 people; open office system
	d. Conference Room	1	290	290	800	800	
	e. Toilet Rooms; male and female.	2	80	160	2 - 75 ea	160	
	f. Lounge/Break Room	1	180	180	150	150	
	g. Receptionist, Switchboard and Lobby	1	270	270	250	250	
	h. Office Supply and Mail Room	1	160	160	200	0	
	i. Telecom/Electric	1	125	125		125	
	j. Janitor	1	60	60		60	
	j. IT server	1	250	250		0	
	k. Storage	1	100	100		0	
	l. Circulation	1	600	600		600	
	m. Employee Check-in	1	0	0		0	
SUB-TOTAL (NET AREA)				4,365		6,000	
PART 8: PRESS FACILITIES							
Space Type	Room Description	Units	SF	Total SF			
Press Box	a. Writing Press Room	1	160	160	750	100	5 at window and 3 back row
	b. TV Broadcast Booth	1	90	90	120	115	
	c. Radio Broadcast Booths - Home, Visitors, aux	3	90	270	240	225	
	d. Camera Booth	1	70	70		70	
	e. PA / Scoreboard / Message Board / Sound	1	140	140	200	192	
	f. PA/Equipment Room	1	160	160	200	180	
Press Support Spaces	a. Lounge/ Work Room	1	180	180		1,435	
	b. Toilets	1	80	80	125	160	unisex
	c. Press Catering	0	150	0	150	0	Casework at back of space for buffet style food service, incl in lounge/work area
	d. Reception	0	120	0	120	0	Included in Lounge/work area
	e. Other Office	0	250	0	250	0	Included in Lounge/work area
Total Press				1,150	2,155	2,477	
Camera Positions	Camera platforms shall be located at the following positions:						Area only. Power, a/v system connection box
	a. High Home (camera booth item d. above)	1	0			0	included above
	b. Low 1st and 3rd at ends of dugouts	2	140	280		280	
	c. High 1st and 3rd at concourse level platform	2	0			0	Included in concourse area
	d. Center field on left field side of batters eye	1	0	0		0	Included in outfield concourse area
SUB-TOTAL (NET AREA)				1,430		2,757	

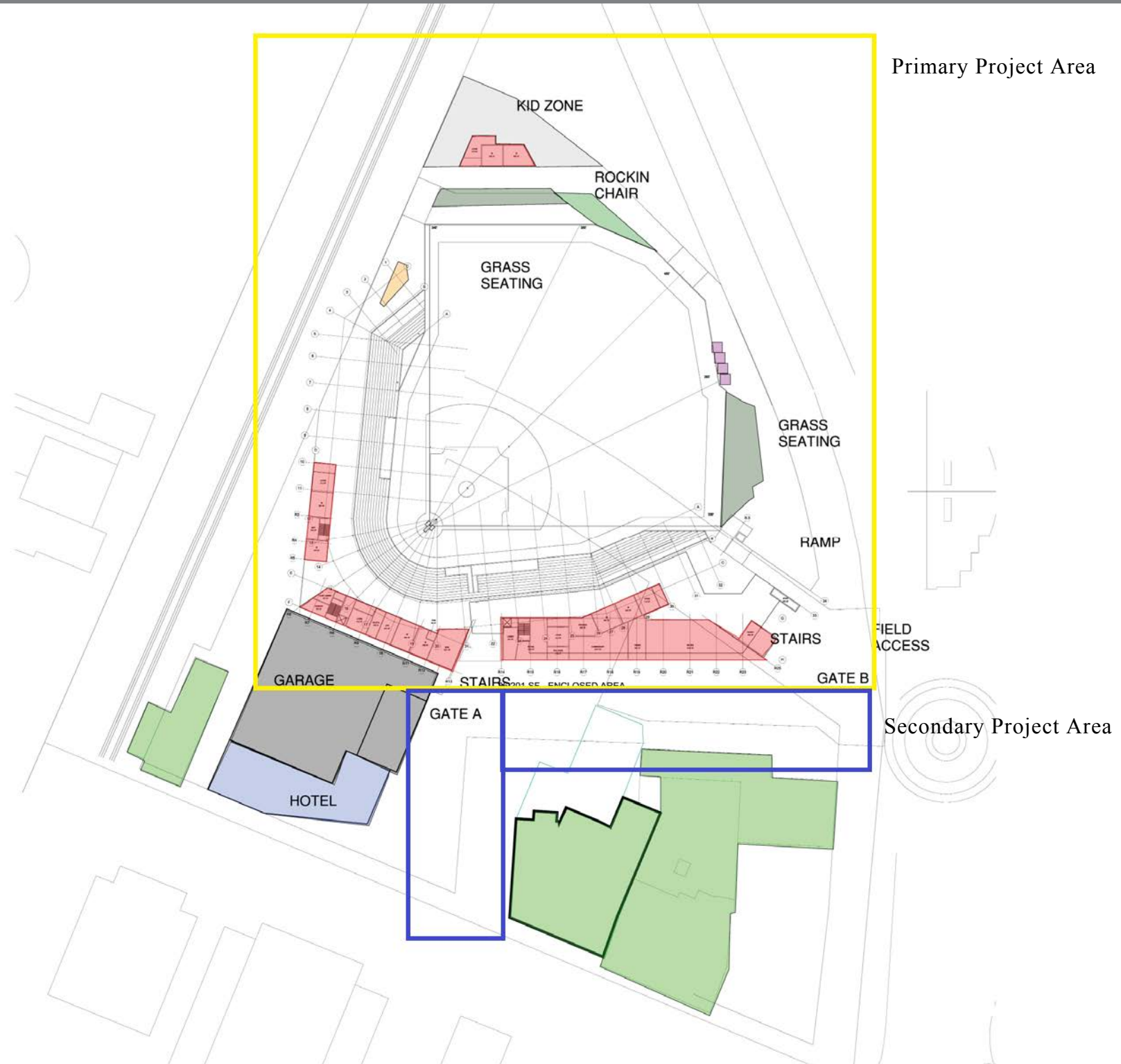
PART 9: STADIUM SERVICES

PART 9: STADIUM SERVICES						
Space Type	Room Description					
		Units	SF	Total SF		
Loading Dock	a. Covered Area (for Maintenance/ Field level)	0	2,400	0	incl in below	2,495
Grounds Crew	a. Grounds Crew - Storage	1	600	600	4,000	3,780
Pump and irrigation controls	b. Grounds Crew - toilet	1	200	200	incl above	150
	c. Grounds Crew- office	1	120	120	incl above	120
	d. Grounds Crew- check in	1	140	140		0
1,506	d. Bin Storage 4 @ 8 x 15	4	59	236		236
Janitorial	a. Custodial Closets	3	70	210		150
	b. Provide water and power for power washing units around public seating & concourse					
	c. Trash Collection	1	530	530		1,100
1,080	d. Central Janitorial	1	550	550		550
M/E/P	a. Mechanical Room	1	660	660		980
	b. Main Electrical Room	1	380	380		210
	c. Emergency Generator Room (Exterior)	0	460	0		0
	d. Electrical Closets	5	75	374		374
	e. Main Tele/data Room	1	160	160		150
	f. Tele/data Closets	4	85	339		339
	g. Fire Pump Room	1	100	100		200
1,300	h. Elevator Equipment Room(s)	2	75	150		150
Stadium Maintenance	a. Shop	1	1,350	1,350	2,000	650
	b. Office	1	90	90	200	90
	d. Storage	1	200	200	200	145
	e. Toilets	1	80	80	125	90
1,800	f. Kitchenette	1	80	80	80	0
SUB-TOTAL (NET AREA)				6,549		11,959
PART 10: MISCELLANEOUS FACILITIES & FEATURES						
Space Type	Room Description					
		Units	SF	Total SF		
Playing Field	a. Ball Field with irrigation, drainage and sand-based root zone infield and outfield Home Plate to field wall- 45' ; Field Dims: CF-400', RF- 325', LF 340'	1	125,000	125,000		124,760
	b. Dugouts (30 players) - includes bench, bat and helmet rack	2	1,117	2,234		2,234
	c. Bat swing areas	0	180	0		0
	d. Toilet serving dugouts	0	80	0		0
	e. Pitcher's Bull Pens	2	2,400	4,800		3,066
Scoreboard	a. Full Video LED Board with Line Score and Ad Panels (HD)	1	0	0		0
Sound System	a. Distributed sound system in main concourse areas, Mini clusters to serve berm & concourse			0		0
	b. Sound system to serve administrative offices, novelty store, and suites					
Kids Zone	a. Kids Play Area with permanent equipment and area for inflatables	1	5,000	5,000		10,000
SUB-TOTAL (NET AREA)				132,034		130,060

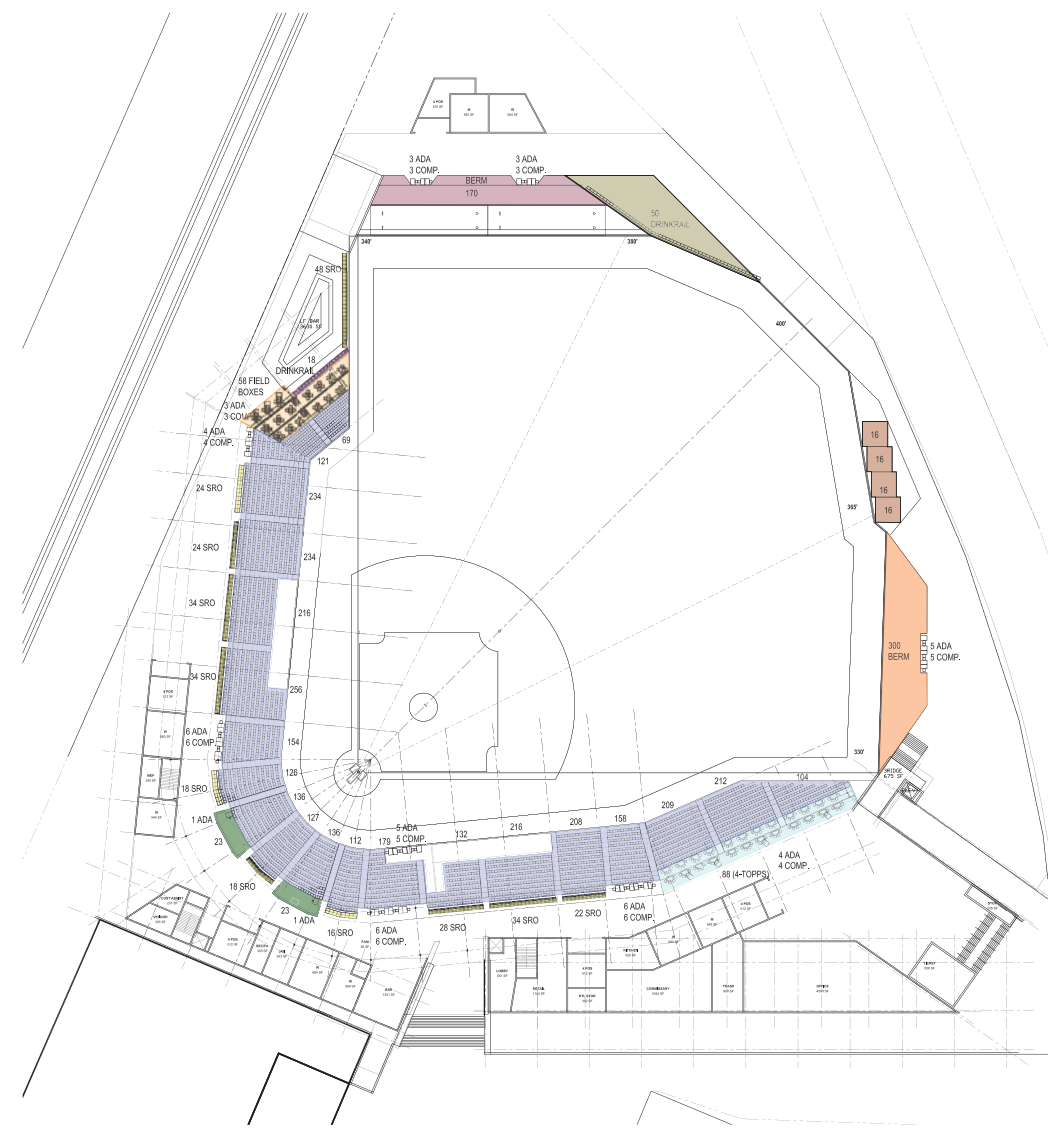
Exterior area - space for two trucks
field and dry storage
4 lockers, 1 shower, 1 wc, 1 urinal, 1 lav
each restroom to have a janitor closet, if possible
Trash compactor/ *confirm capacity - 30 cubic yds.*
Exterior area
total of 1800 sf in the maintenance area
unisex toilet

SUMMARY								
		Units	SF	Total SF				
SUB-TOTAL PART 1: SPECTATOR FACILITIES				45,900		55,261		
SUB-TOTAL PART 2: CONCESSION FACILITIES				7,902		13,203		
SUB-TOTAL PART 3: CONFERENCE FACILITIES				0		0		
SUB-TOTAL PART 4: SPECTATOR AMENITIES				2,470		4,850		
SUB-TOTAL PART 5: CIRCULATION				65,386		81,641		
SUB-TOTAL PART 6: PLAYER AND OFFICIALS FACILITIES				14,977		26,302		
SUB-TOTAL PART 7: ADMINISTRATION				4,365		6,000		
SUB-TOTAL PART 8: PRESS FACILITIES				1,430		2,757		
SUB-TOTAL PART 9: STADIUM SERVICES				6,549		11,959		
SUB-TOTAL PART 10: MISCELLANEOUS FACILITIES & FEATURES				132,034		130,060		
PROGRAM NET AREA				281,013		332,033		
Subtract playing field, bullpens, kid zone				-134,800		-137,826		
Subtract SOG flatwork and landscape areas				-3,000		-10,000		
BUILDING NET SQUARE FOOTAGE				143,213		184,207	developer promised 100 spaces, 20 outside and 80 in the garage	

CONCEPT PLANS & SECTIONS



FAYETTEVILLE BALLPARK



MAIN CONCOURSE SEATING

DESCRIPTION	TREAD DEPTH	SEAT WIDTH (MIN.)	WC	COMP.	SEATS
RESERVED SEATS	3'-0"	21"	-	-	3,339
ADA SEATING FOR SEATING BOWL	-	-	27	27	54
TOTAL STADIUM CHAIR SEATING					3,393

Color-coded legend for seating types:

- Blue: Reserved Seats
- Light Blue: Right Field 4-Topps
- Orange: Left Field Boxes
- Pink: Left Field Bar Seating
- Green: Concourse Suites
- Purple: LF Berm Seating
- Light Orange: RF Berm Seating
- Olive: Outfield Park Seating
- Brown: Outfield Cabanas
- Yellow: SRO

DESCRIPTION	TREAD DEPTH	SEAT WIDTH (MIN.)	SEATS	WC	COMP.	SEATS
RIGHT FIELD 4-TOPPS	6'-0"	21"	88	4	4	96
LEFT FIELD BOXES (16 BOXES)	9'-0"	-	58	3	3	64
LEFT FIELD BAR SEATING	-	50"	16	1	1	18
CONCOURSE SUITES (2 SUITES)	-	-	44	2	2	48
LF BERM SEATING	-	1,700 SF PER PERSON	170	6	6	182
RF BERM SEATING	-	3,000 SF PER PERSON	300	5	5	310
OUTFIELD PARK SEATING	-	50"	46	2	2	50
OUTFIELD CABANAS (4 UNITS)	-	-	56	4	4	64
SRO	-	30" (2 DEEP)	300	-	-	300
TOTAL GROUP SEATING					1,132	
TOTAL MAIN CONCOURSE SEATING					4,525	

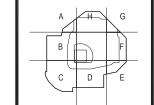
SUITE SEATING

DESCRIPTION	TREAD DEPTH	SEAT WIDTH (MIN.)	SEATS	WC	COMP.	SUBTOTAL
1ST BASE PARTY DECK	4'-0"	21" SEATS, 28" DRINKRAIL	56 SEATS, 20 DRINKRAIL, 74 TABLES	-	-	150
CLUB LOUNGE	4'-0"	22" SEATS	98 SEATS	-	-	98
SUITE SEATING (6 SUITES)	4'-0"	22" SEATS	12 SEATS (SUITES 1-6)	-	-	72
TOTAL SUITE LEVEL SEATING					320	

TOTAL STADIUM CAPACITY	4,845
------------------------	-------

REVISIONS

NO.	DATE	DESCRIPTION



PROJECT NO. 16-0078
 PREPARED BY POPULOUS
 DATE: JANUARY 17, 2017
 SHEET NO.

MAIN CONCOURSE SEATING PLAN

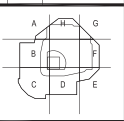
ST1-1

1 MAIN CONCOURSE SEATING PLAN
 100' x 140'

FAYETTEVILLE BALLPARK

REVISIONS

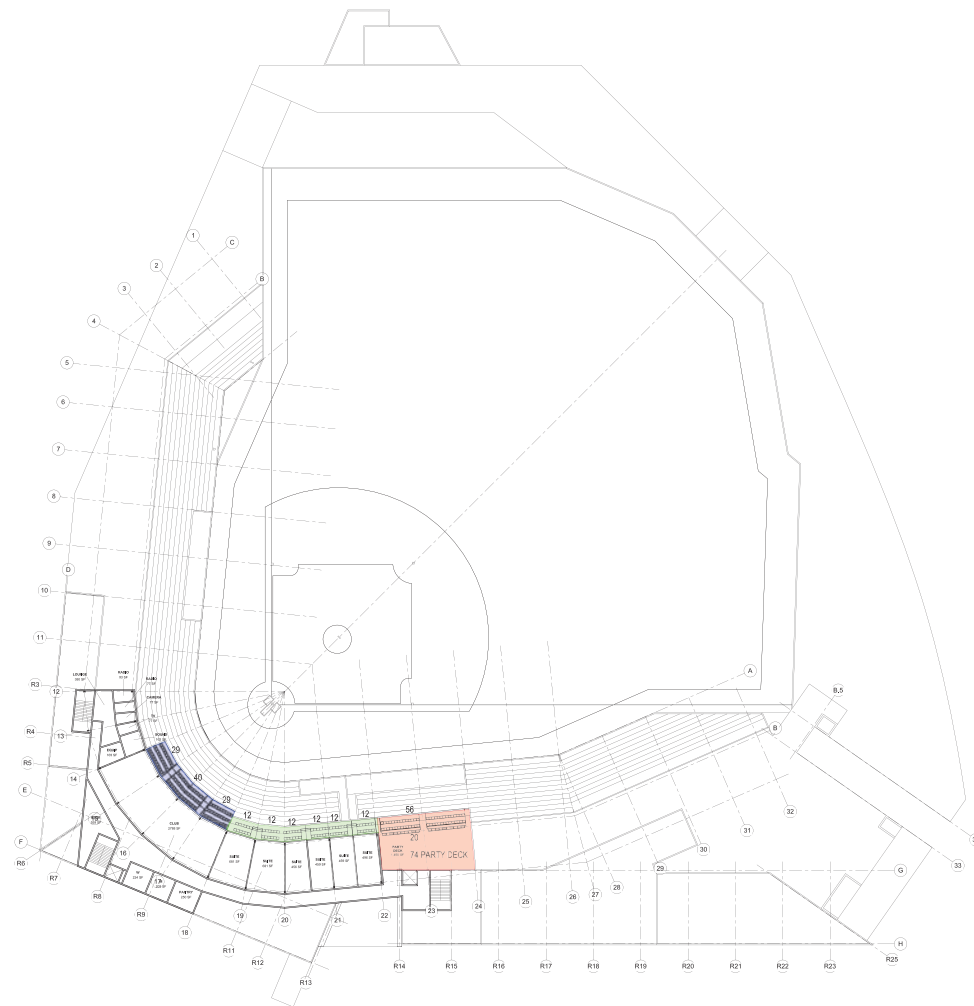
NO.	DATE	DESCRIPTION



PROJECT NO. 16-4379
REVISED: JANUARY 17, 2017
SHEET NO. ST1-2

SUITE LEVEL SEATING PLAN

ST1-2



MAIN CONCOURSE SEATING

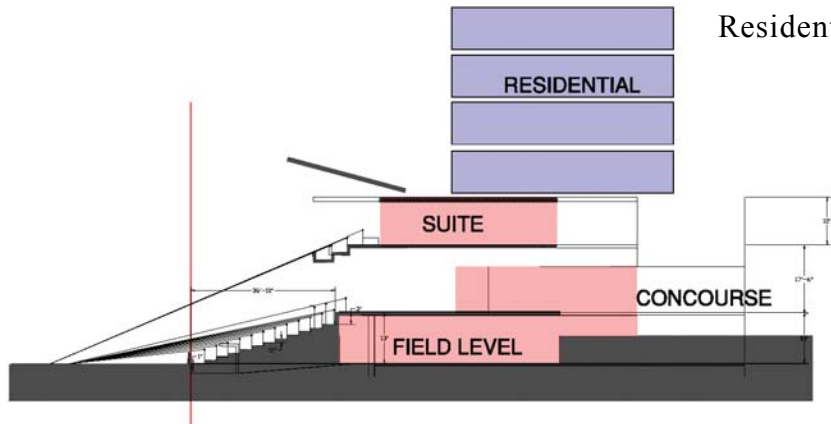
DESCRIPTION	TREAD DEPTH	SEAT WIDTH (MIN.)	WC	COMP.	SEATS
RESERVED SEATS	3'-0"	21"	-	-	3,339
ADA SEATING FOR SEATING BOWL	-	-	27	27	54
TOTAL STADIUM CHAIR SEATING					3,393

DESCRIPTION	TREAD DEPTH	SEAT WIDTH (MIN.)	SEATS	WC	COMP.	SEATS
RIGHT FIELD 4-TOPPS	6'-0"	21"	88	4	4	96
LEFT FIELD BOXES (16 BOXES)	9'-0"	-	58	3	3	64
LEFT FIELD BAR SEATING	-	50"	16	1	1	18
CONCOURSE SUITES (2 SUITES)	-	-	44	2	2	48
LF BERM SEATING	-	1,700 SF 10 SF PER PERSON	170	6	6	182
RF BERM SEATING	-	3,000 SF 10 SF PER PERSON	300	5	5	310
OUTFIELD PARK SEATING	-	50"	46	2	2	50
OUTFIELD CABANAS (4 UNITS)	-	-	56	4	4	64
SRO	-	30" (2 DEEP)	300	-	-	300
TOTAL GROUP SEATING						1,132
TOTAL MAIN CONCOURSE SEATING						4,525

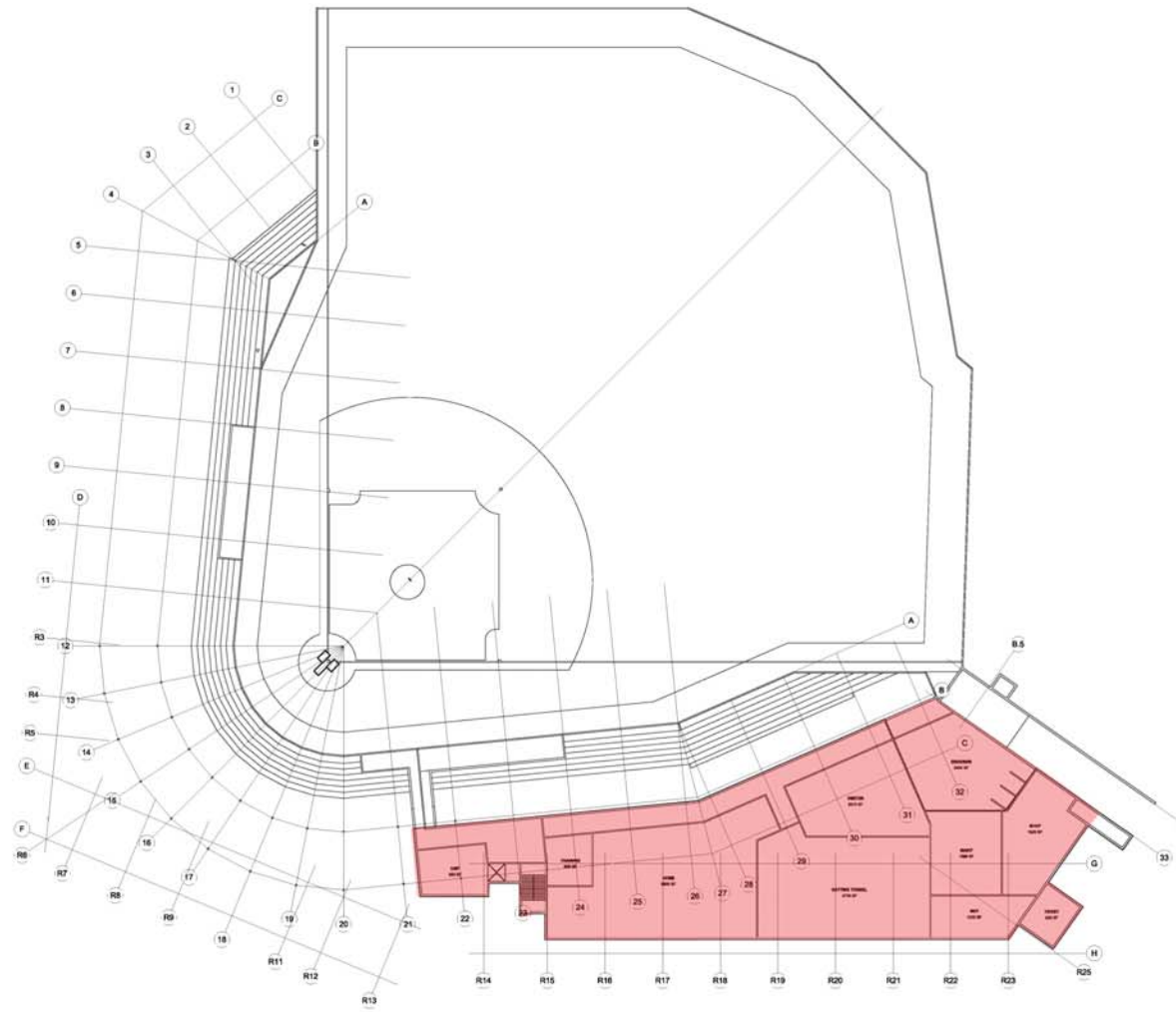
SUITE SEATING

DESCRIPTION	TREAD DEPTH	SEAT WIDTH (MIN.)	SEATS	WC	COMP.	SUBTOTAL
1ST BASE PARTY DECK	4'-0"	21" SEATS 28" DRINKRAIL	56 SEATS 20 DRINKRAIL 74 TABLES	-	-	150
CLUB LOUNGE	4'-0"	22" SEATS	98 SEATS	-	-	98
SUITE SEATING (6 SUITES)	4'-0"	22" SEATS	12 SEATS (SUITE 1-6)	-	-	72
TOTAL SUITE LEVEL SEATING						320
TOTAL STADIUM CAPACITY						4,845

1 SUITE LEVEL SEATING PLAN
1/22" = 1/4"

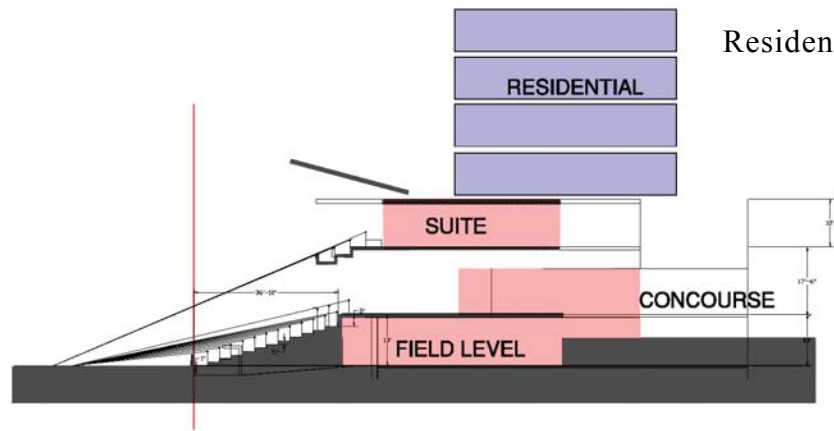


Residential Development Not in Scope

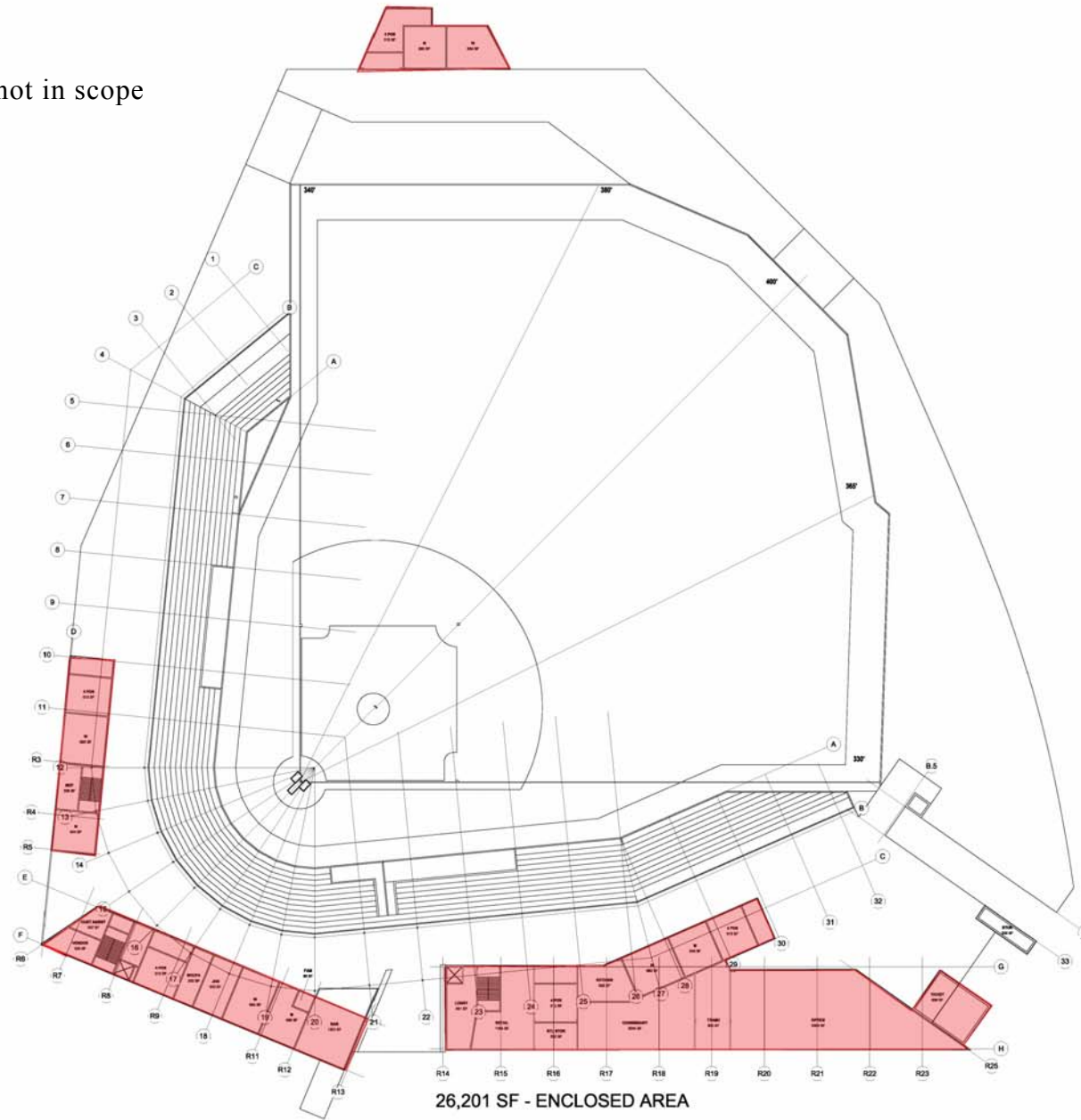


24,833 SF - ENCLOSED AREA

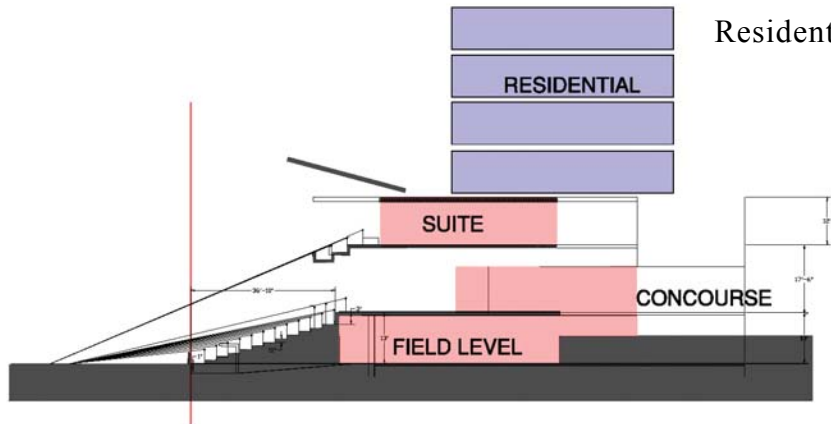
FIELD LEVEL



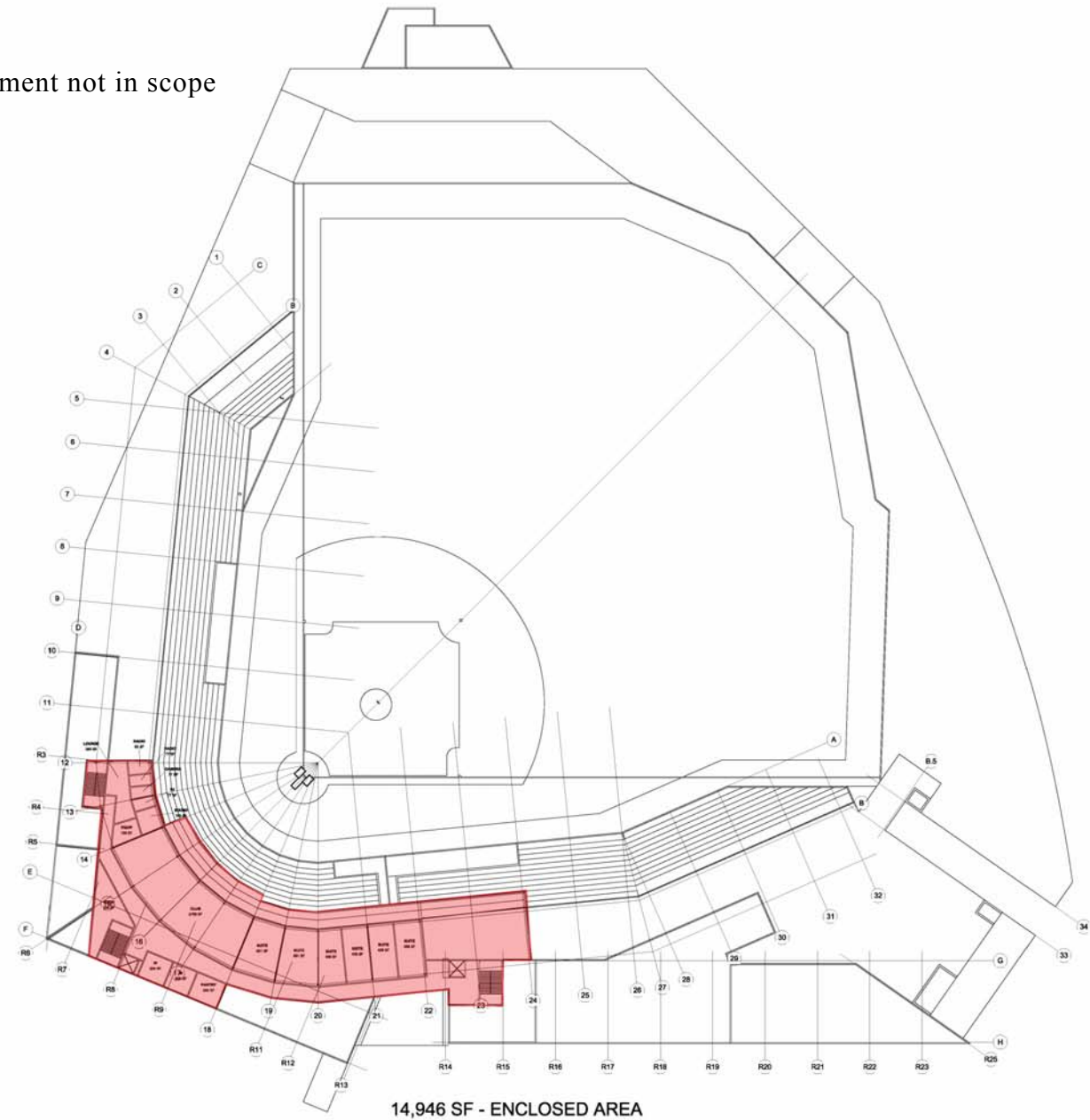
Residential Development not in scope



MAIN CONCOURSE LEVEL



Residential Development not in scope



14,946 SF - ENCLOSED AREA

SUITE LEVEL

■ CONCEPT IMAGES





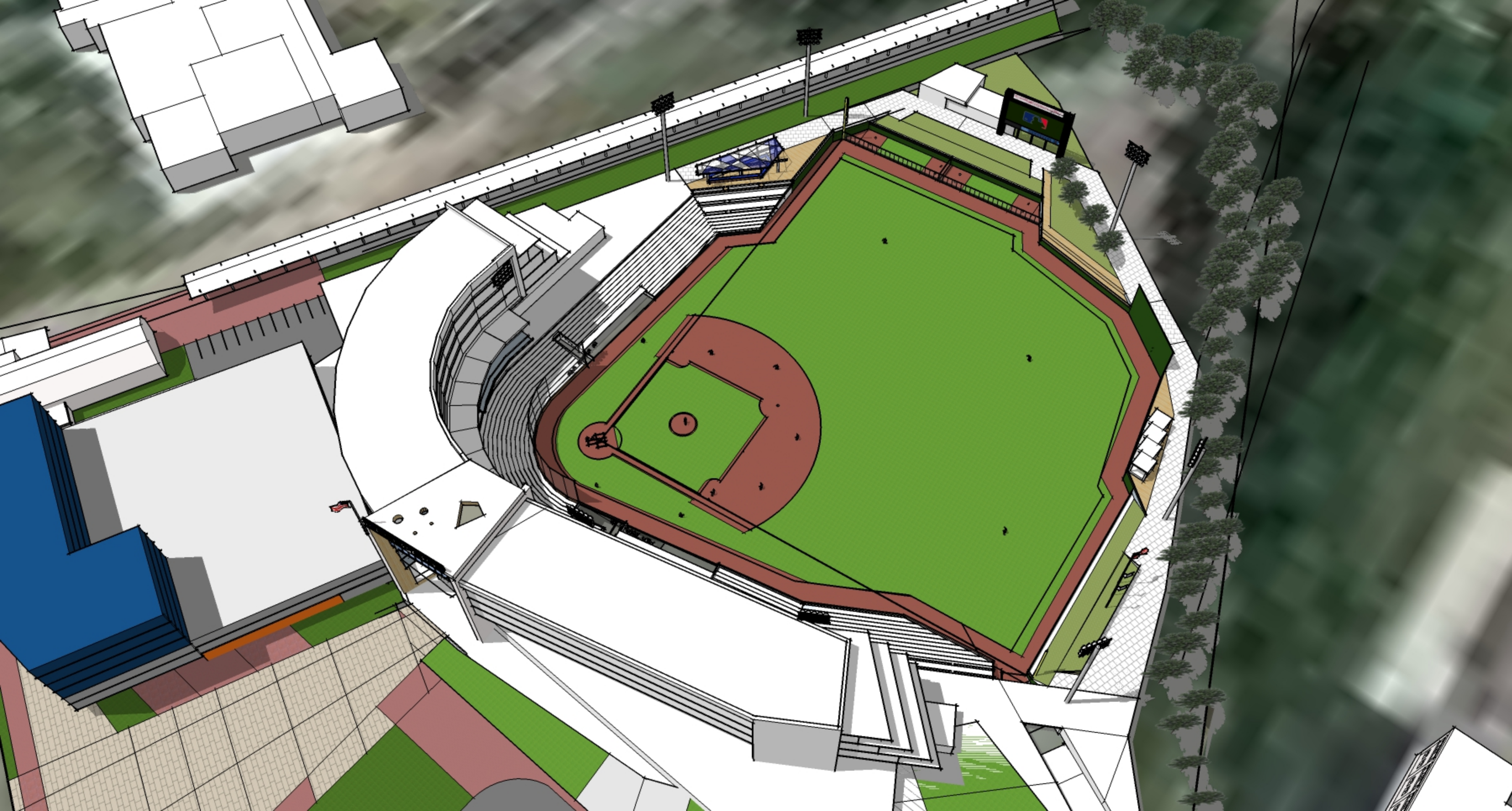




IMAGE 3



IMAGE 4



IMAGE 5



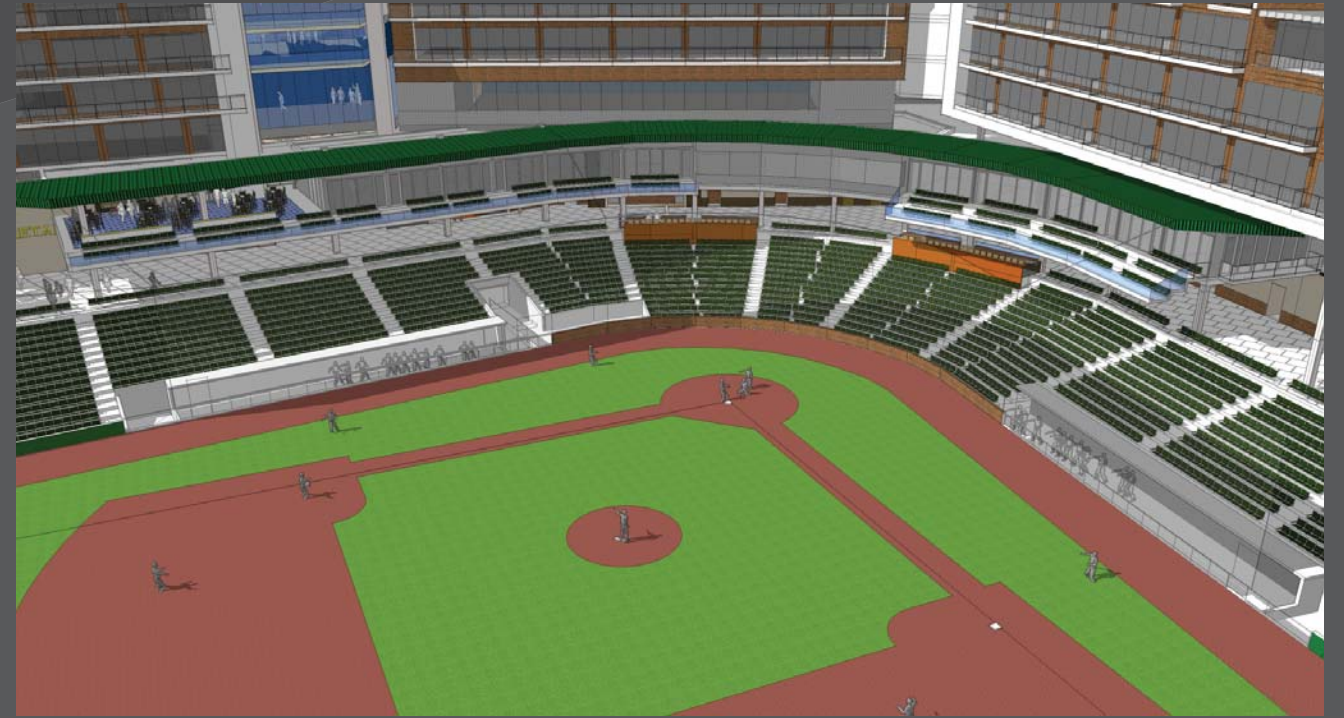
A



B



C



D

IMAGE 6