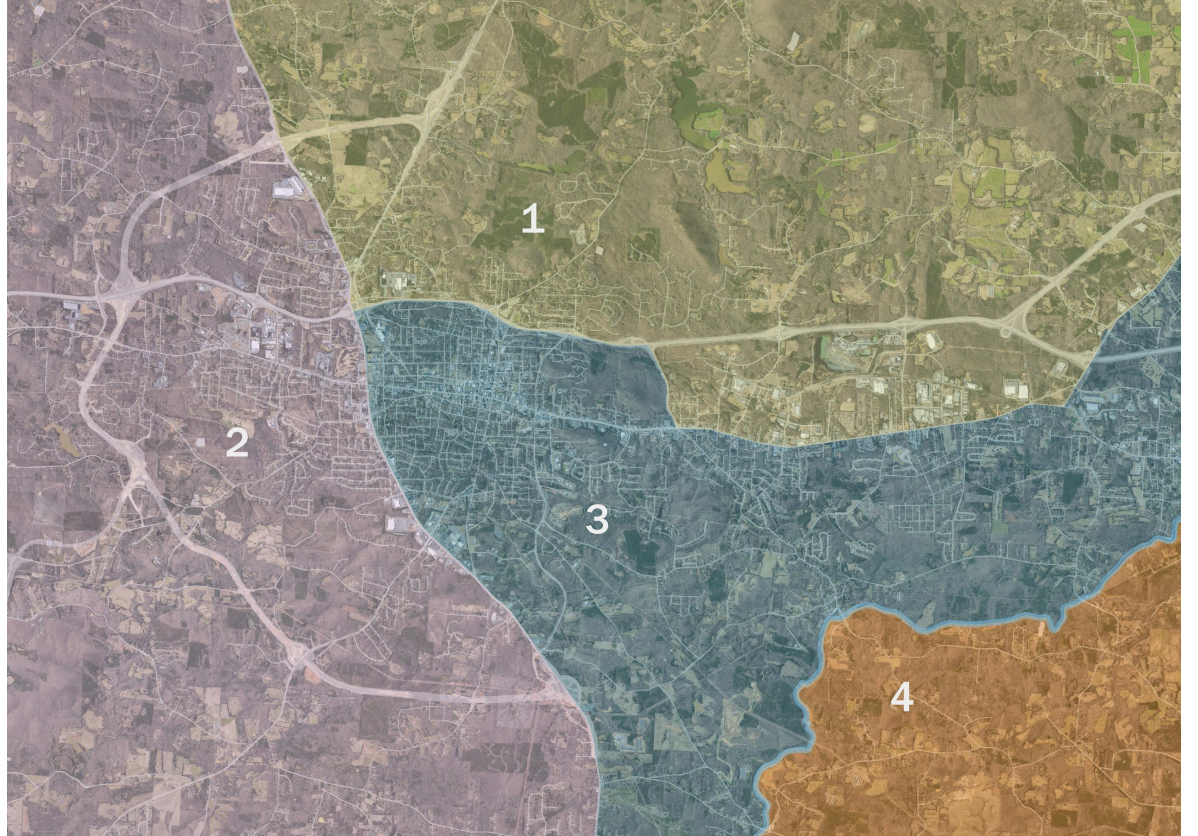


# City of Fayetteville Guiding Principles For Redistricting

Caroline Mackie  
Poyner Spruill LLP

Tara Bright  
Poyner Spruill LLP

Blake Esselstyn  
Mapfigure Consulting



Local Redistricting Service  
August 30, 2021



# Guiding Principles

- Instructions to demographer
- Required guiding principles
- Optional guiding principles
  - What is important to Fayetteville and its residents?
  - What should we know about Fayetteville?
- Contract: 2-3 alternative plans from LRS consultants



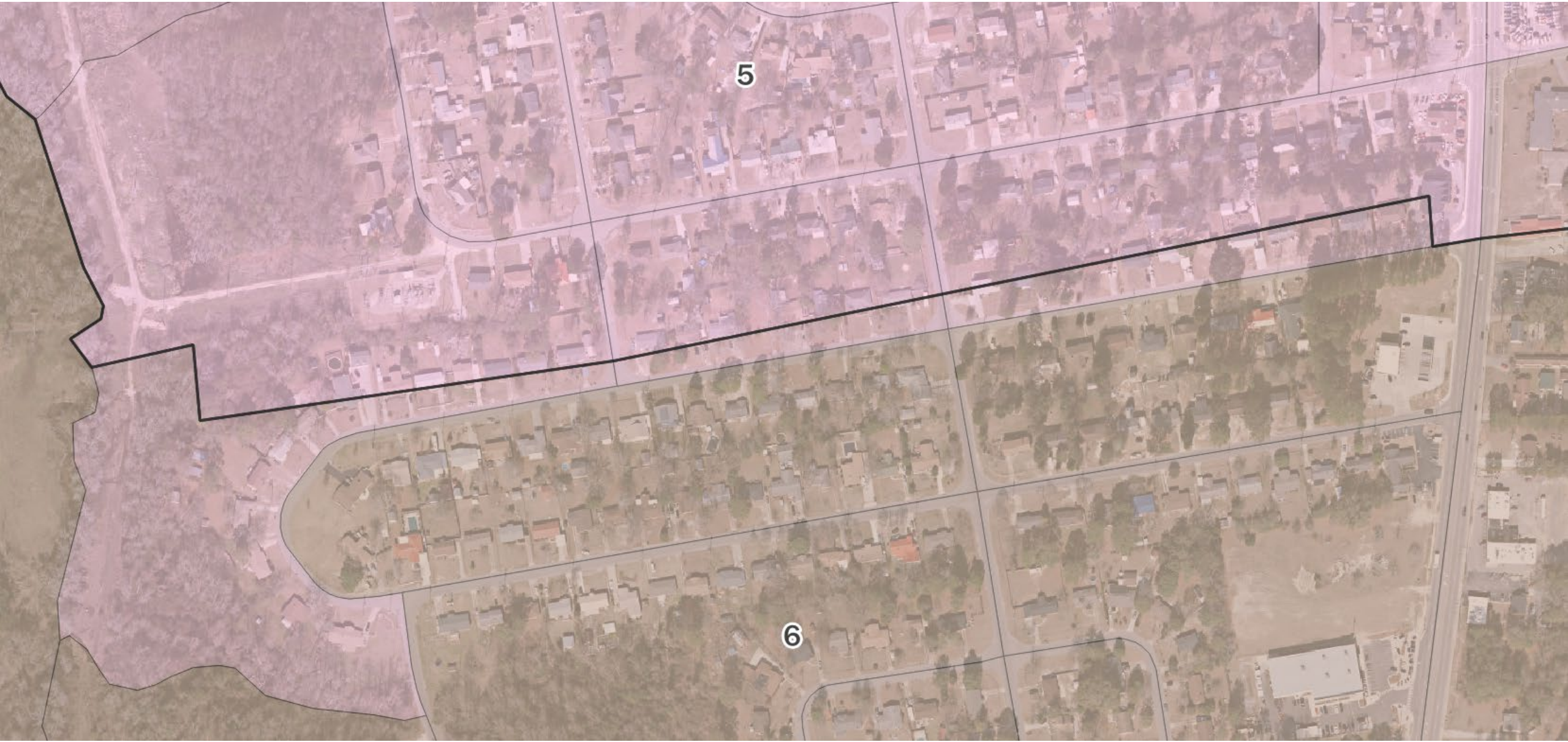
# A Note about Split Blocks

- But first...a note about split blocks



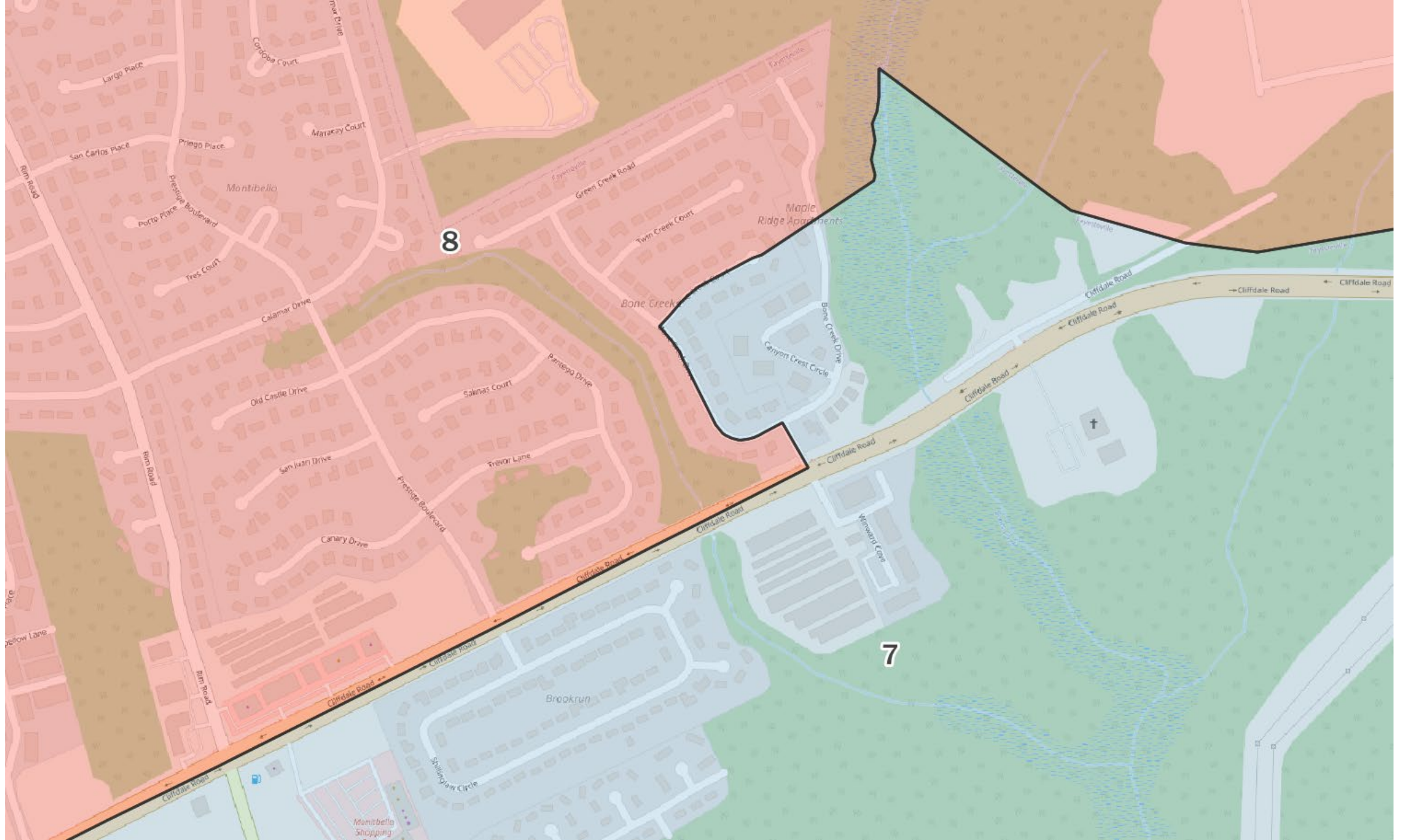
5

6



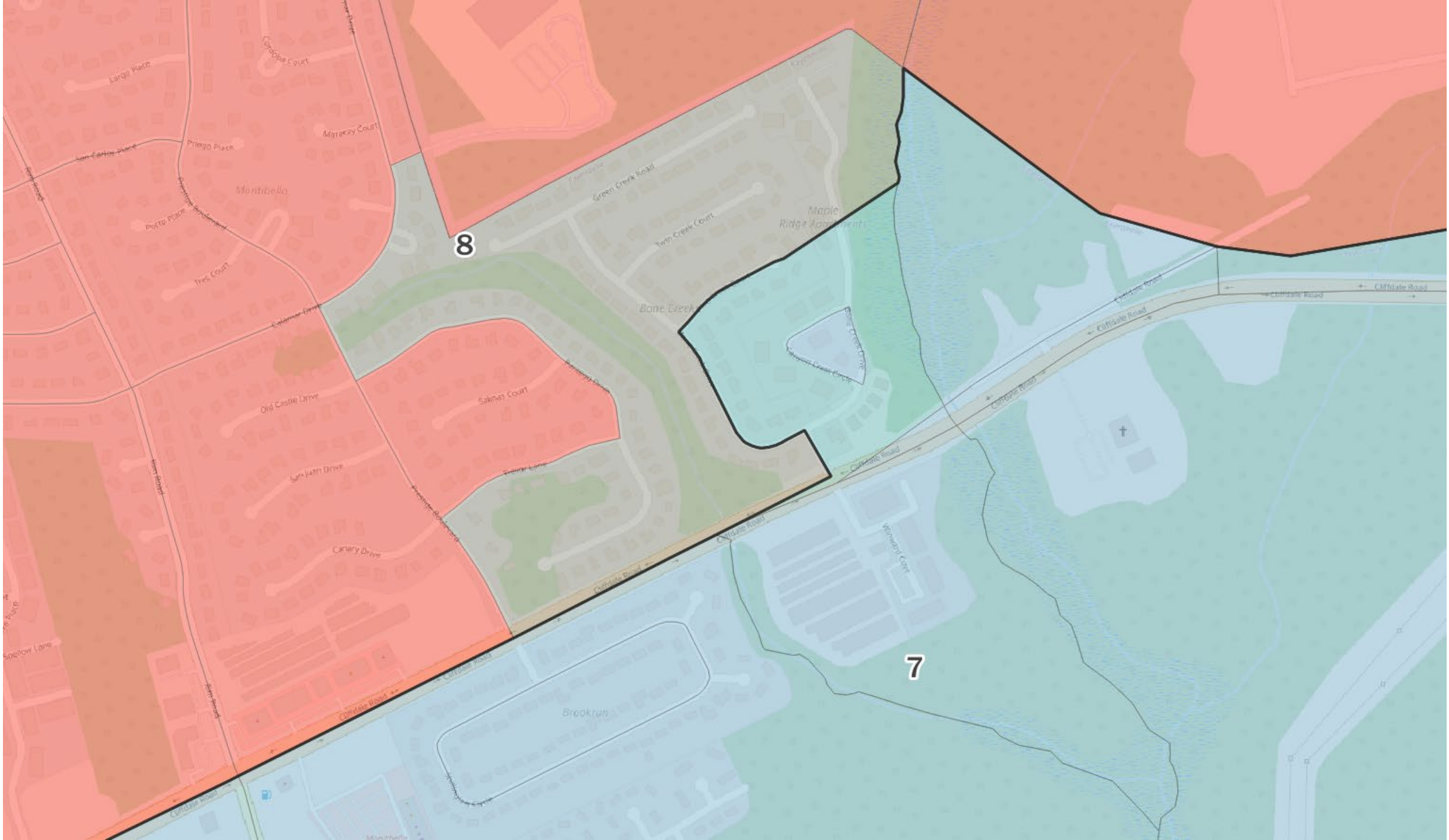
5

6



8

7



8

7



# Required Guiding Principles

1. To comply with one-person, one-vote constitutional principles, every district's total population should be within plus or minus 5% of the ideal district size.
2. Minority voting strength should not be diluted, but race should not unnecessarily predominate.



## City of Fayetteville

- 2019 estimated population: **211,657**
- Ideal district population: **23,517**
- Range: **22,341-24,693**



## Optional Guiding Principles

1. Recognize and respect communities of interest and neighborhood boundaries
2. Use precincts as building blocks for the districts, to the extent possible
3. Avoid the pairing of incumbents in the same district
4. Consider areas of potential future population growth



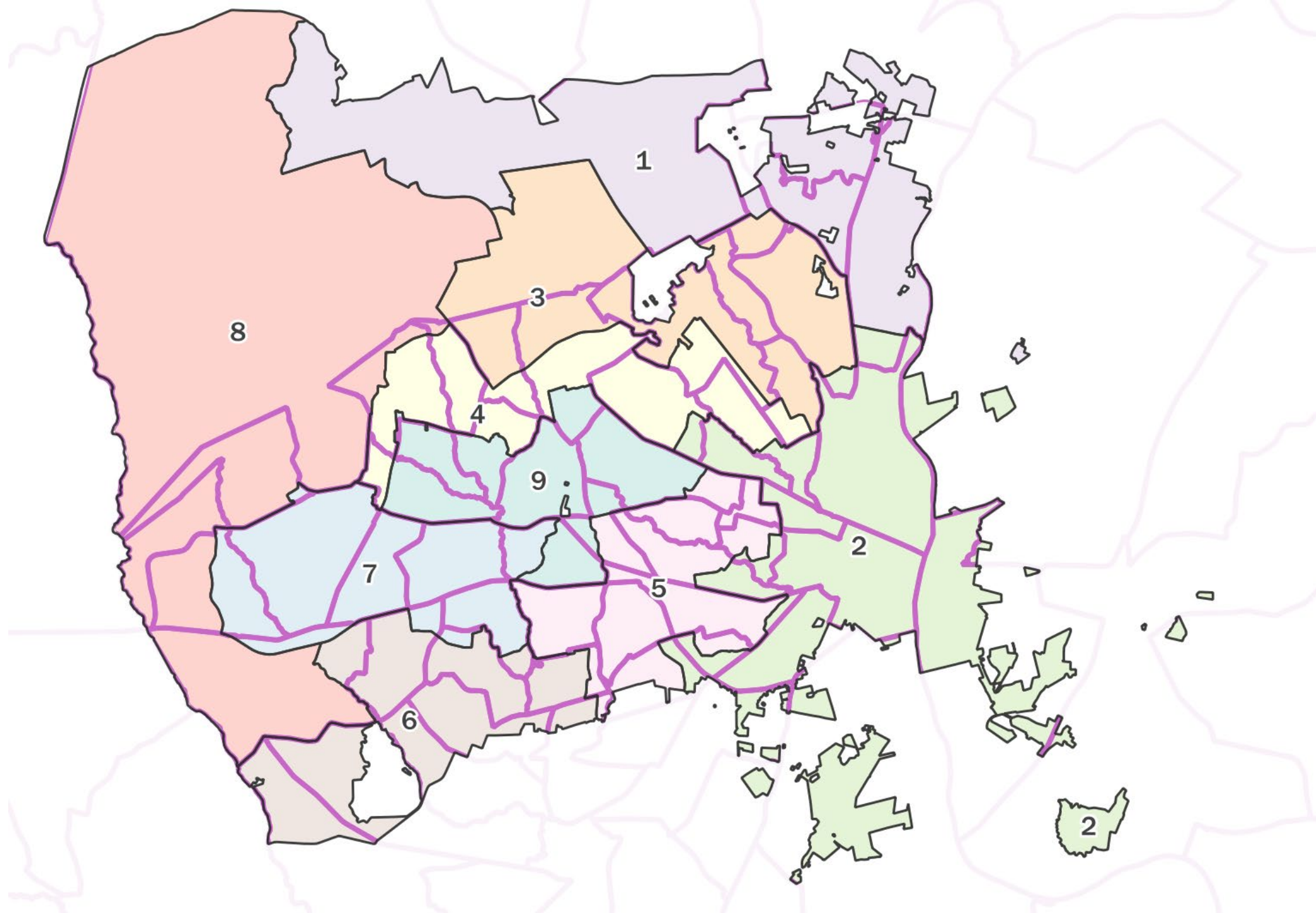
## Optional Guiding Principles

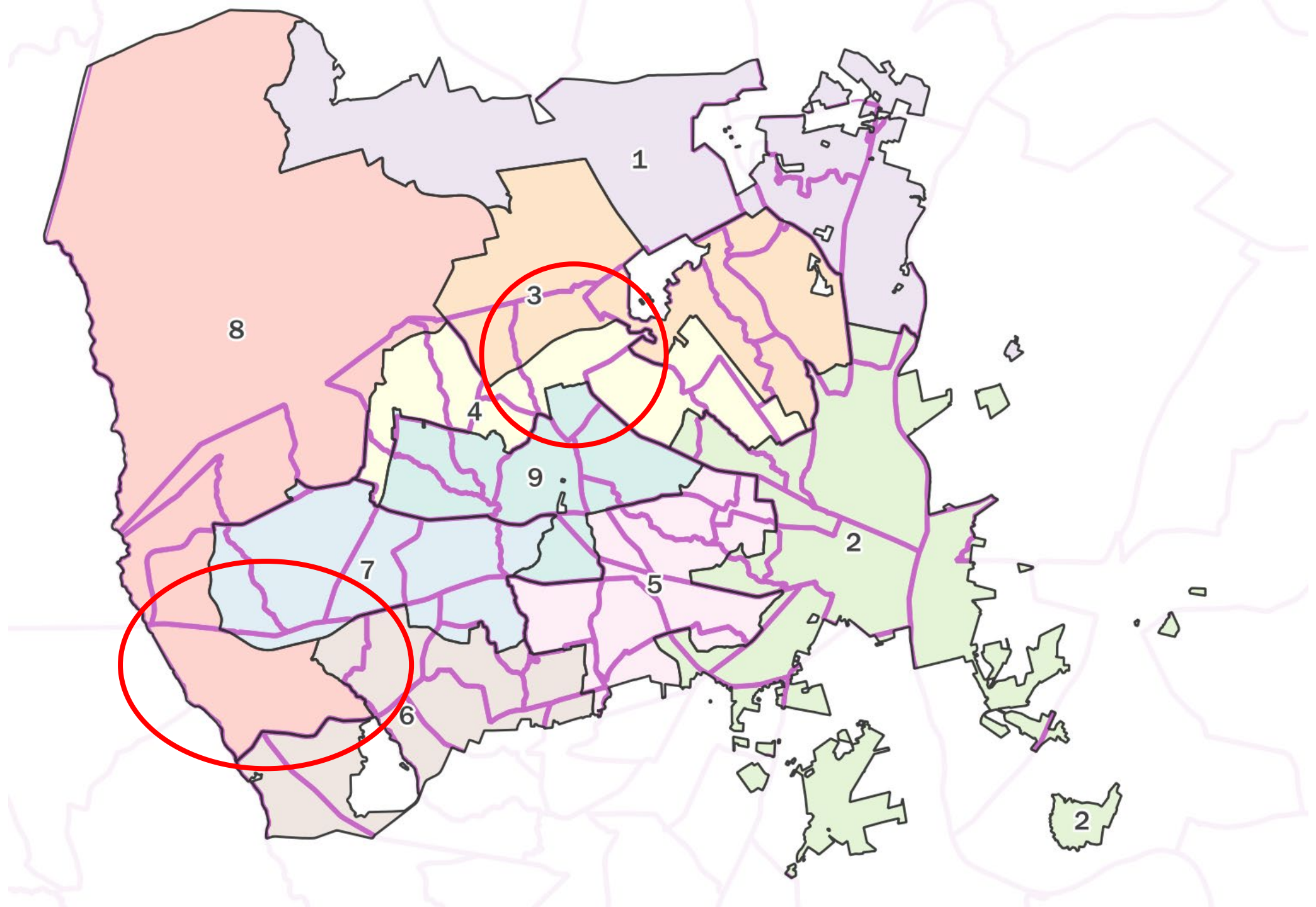
5. In order to minimize voter confusion, districts should retain their current configuration, to the extent possible (“core preservation”)
6. Alternatively, the existing district lines should not be considered except to the extent legally required (“blank slate”)
7. Follow natural boundaries and physical features, such as roads or waterways, to the extent possible
8. Districts should be reasonably compact, to the extent possible

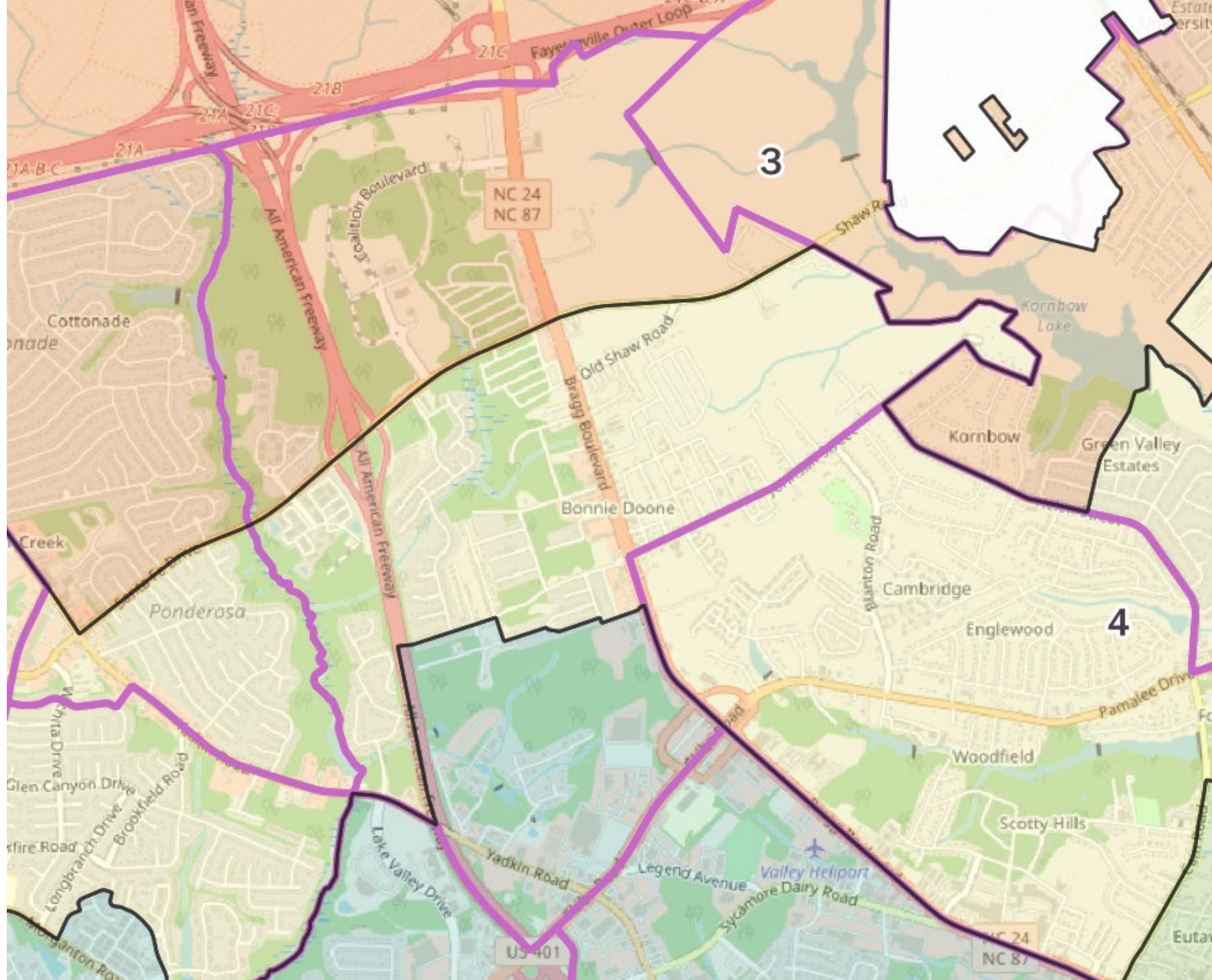


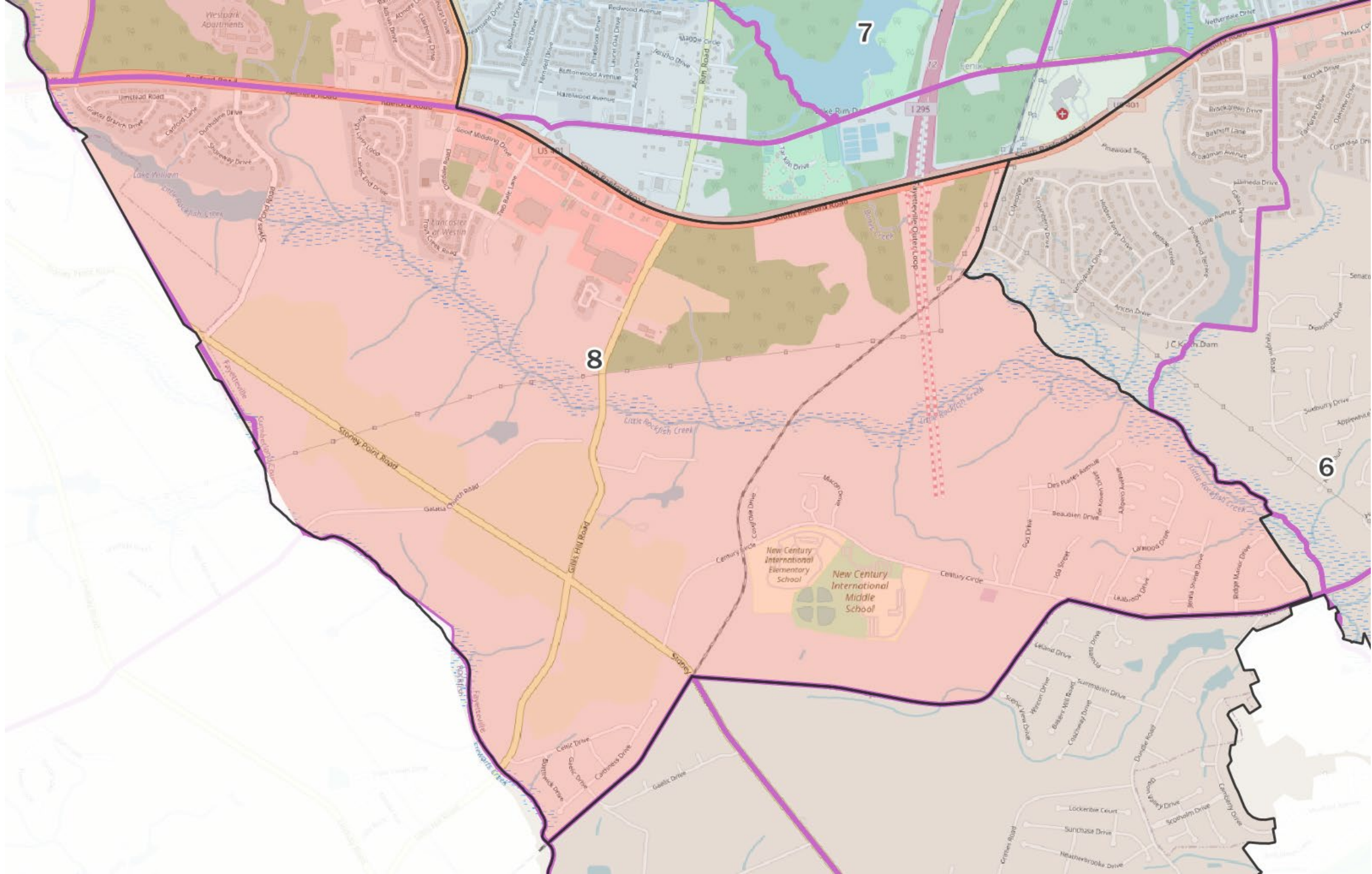
## Considering Precincts

Optional guiding principle:  
Use precincts as building blocks for the  
districts, to the extent possible







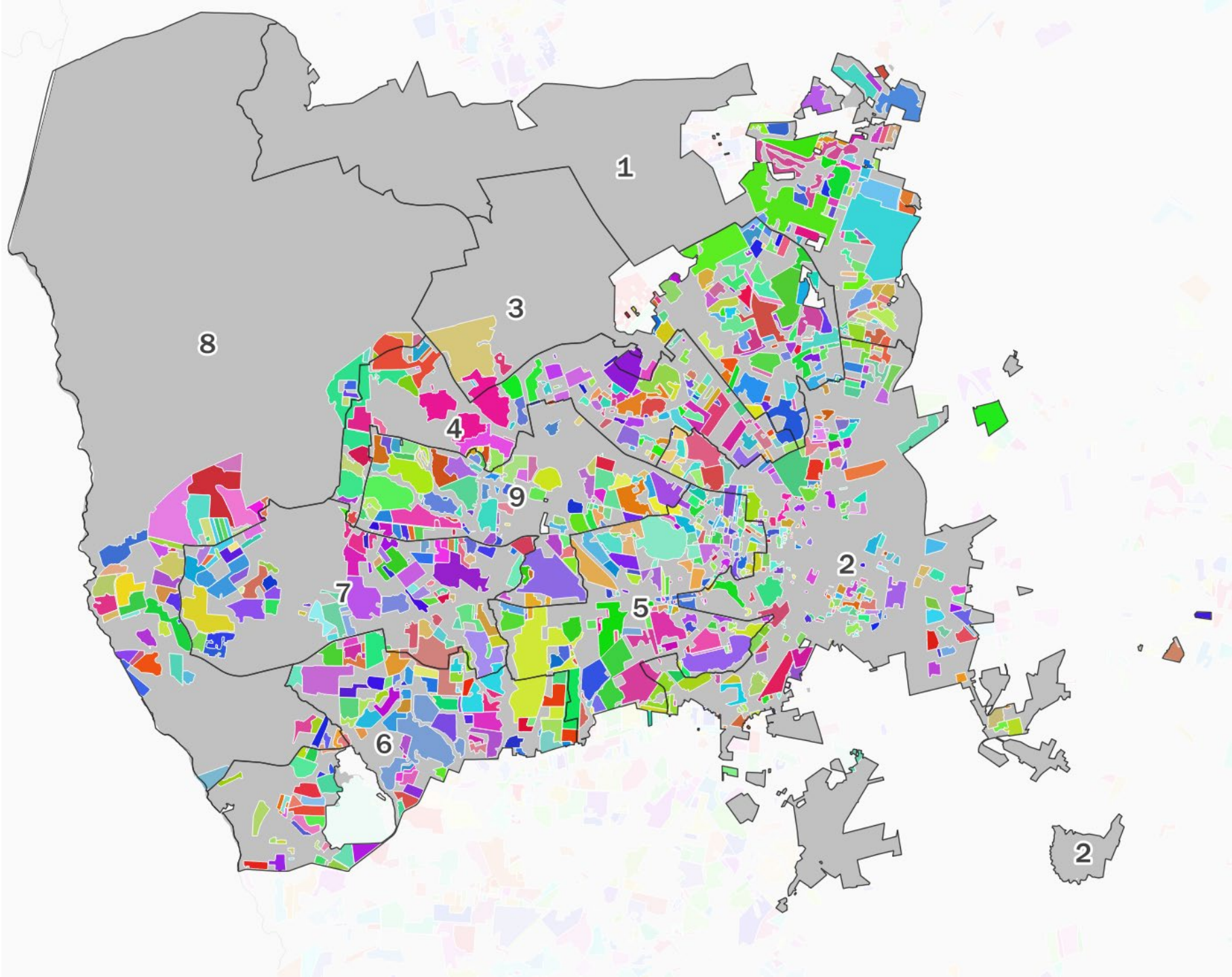


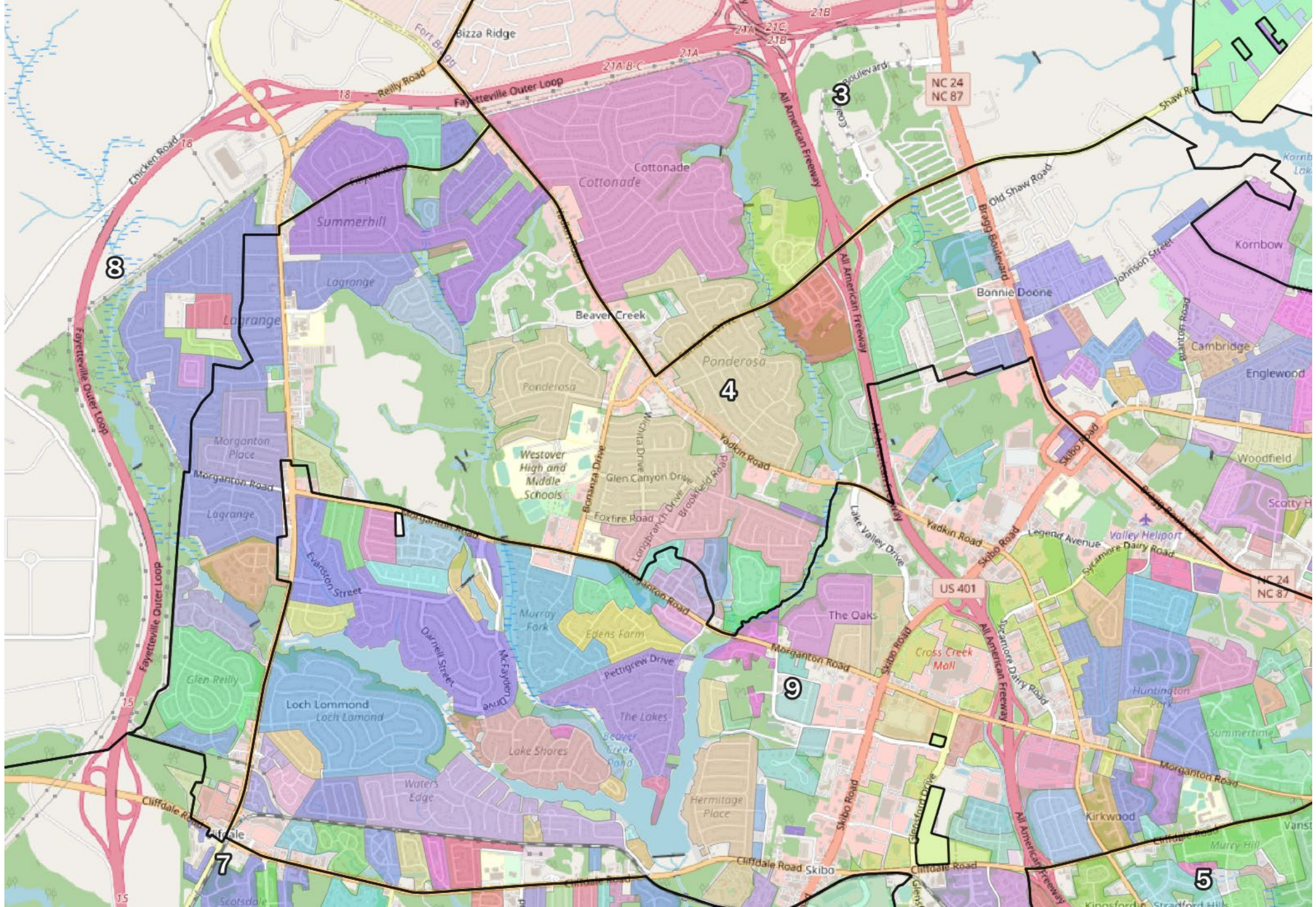


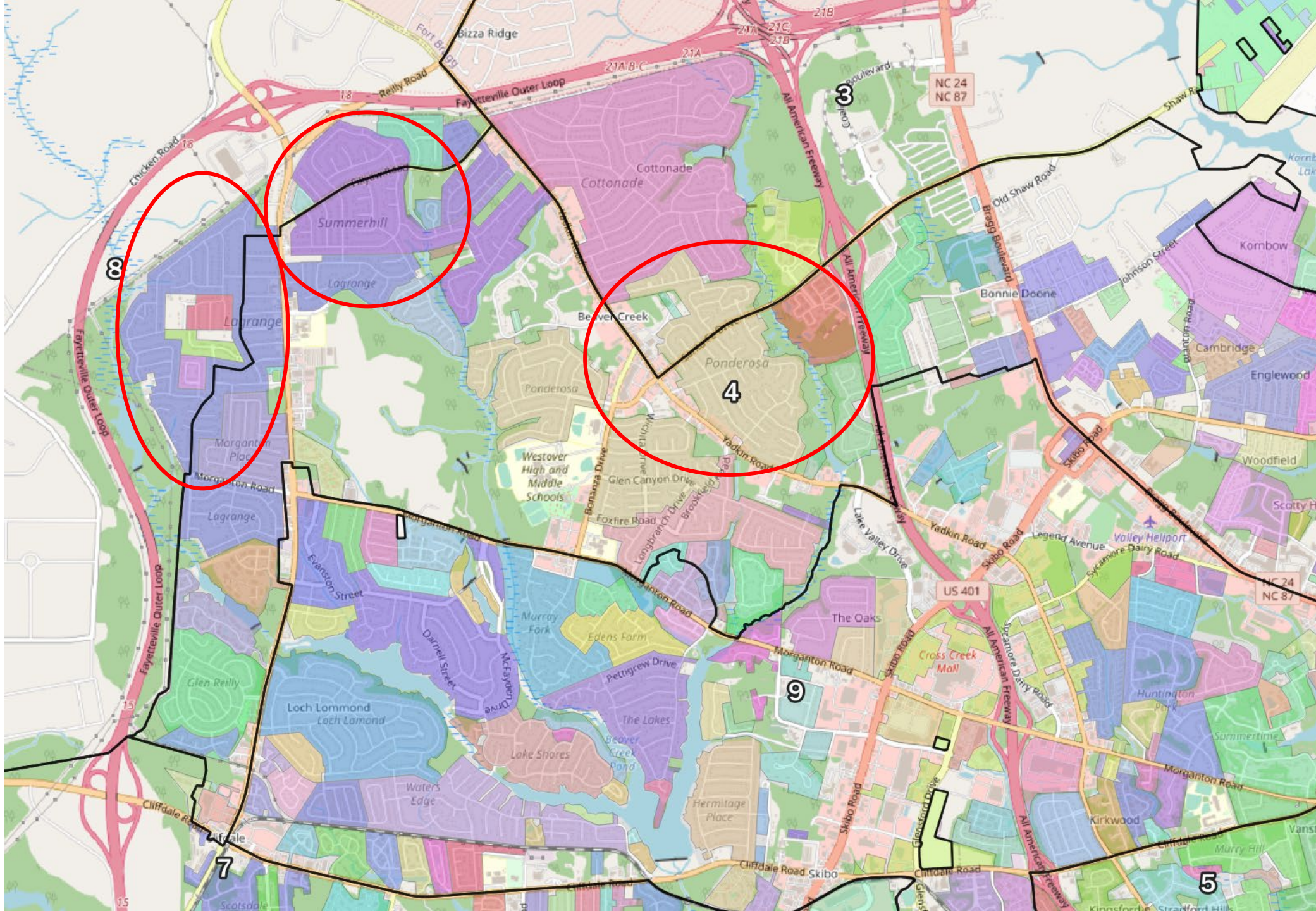


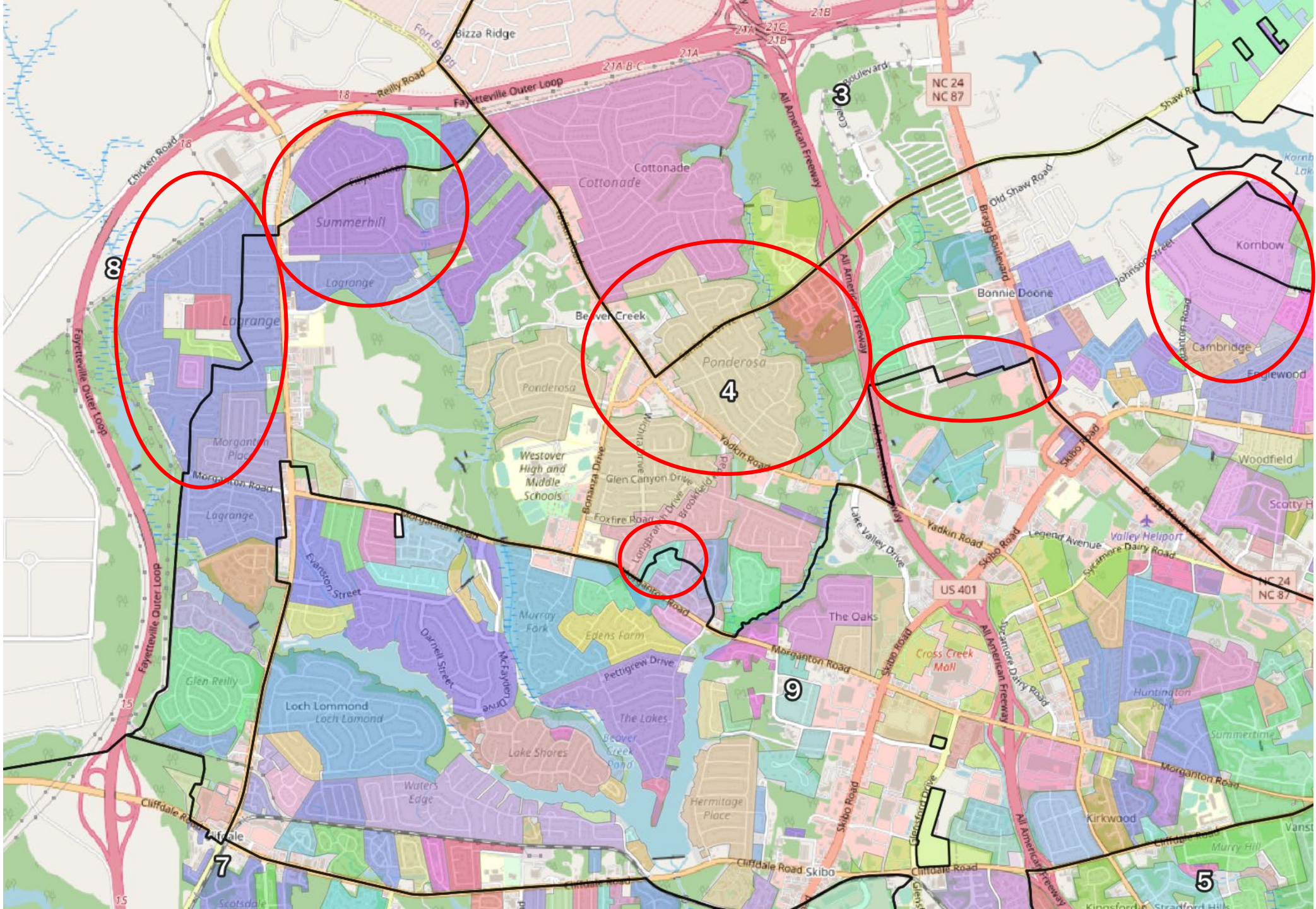
## Considering Neighborhoods and Subdivisions

Optional guiding principle: Recognize and respect communities of interest and neighborhood boundaries









# Questions/Discussion