

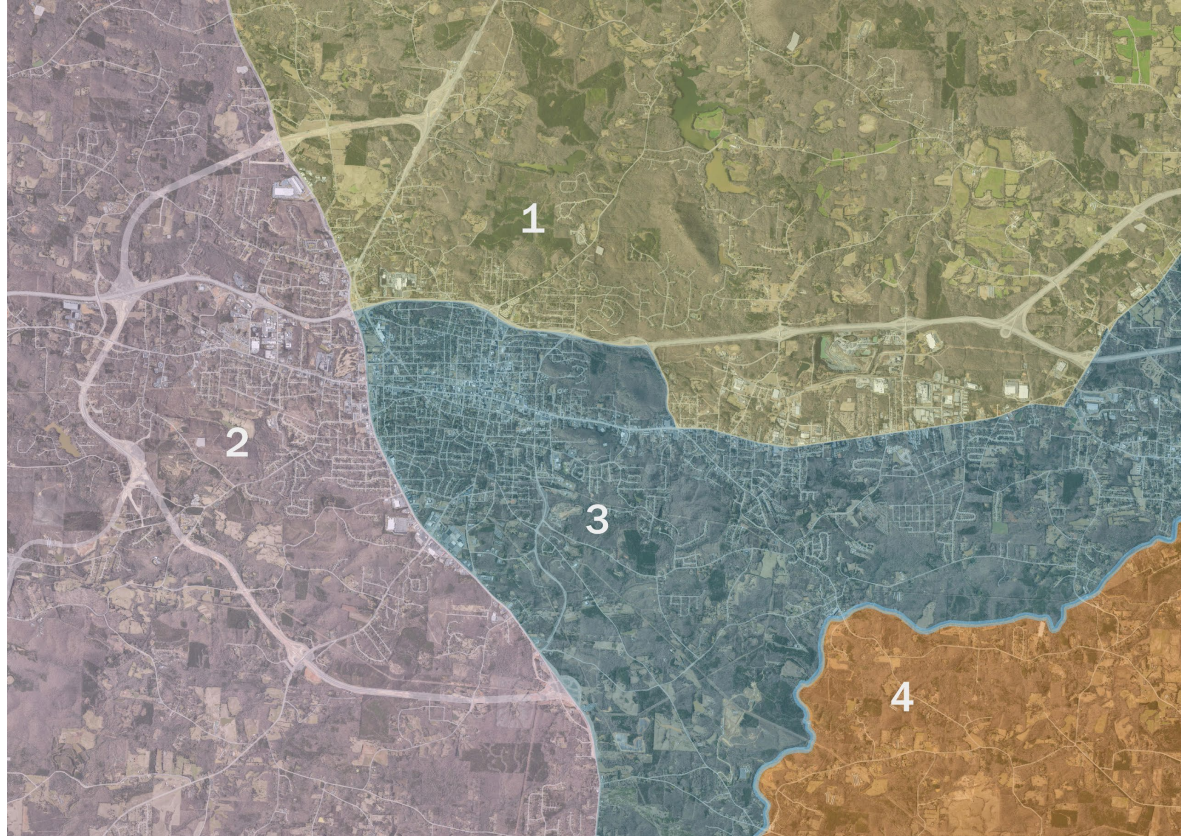
# City of Fayetteville Redistricting

---

Caroline Mackie  
Poyner Spruill LLP

Tara Bright  
Poyner Spruill LLP

Blake Esselstyn  
Mapfigure Consulting



Local Redistricting Service  
September 27, 2021



# Guiding Principles

On August 31, 2021, City Council reached consensus on the following principles:

1. Preserve the core of existing districts, to the extent possible
2. Avoid pairing incumbents
3. Keep neighborhoods whole, to the extent possible
4. Consider areas of future growth
5. Follow geographic features, such as major roads and waterways, to the extent possible

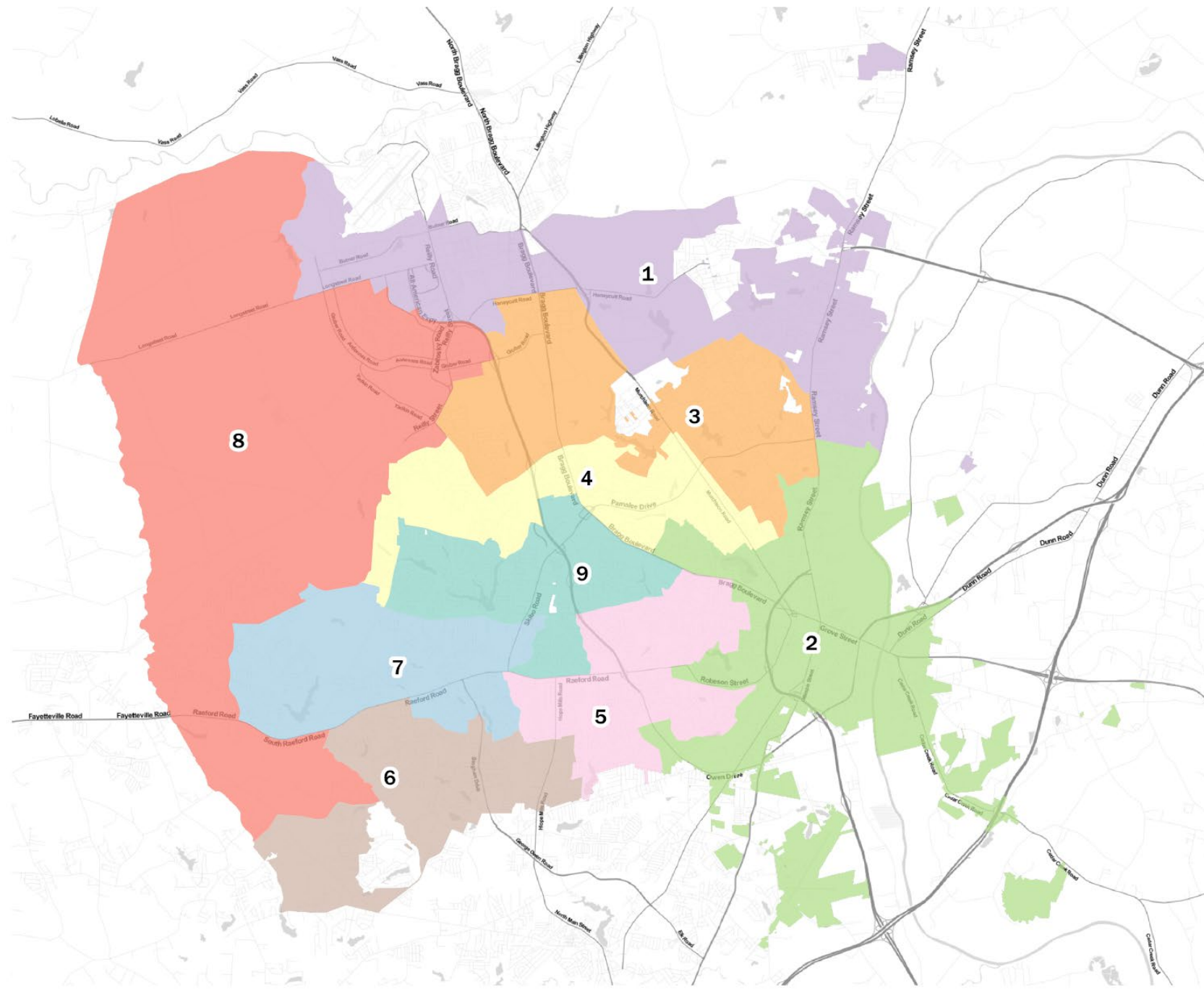


## Timeline

- **September 27:** Presentation of 3 alternatives (Options A, B, and C)
- **October 11:** Public hearing on proposed plans
- **October 27:** Adoption of resolution for selected plan

City of Fayetteville  
 Redistricting 2021  
 Existing Council Districts

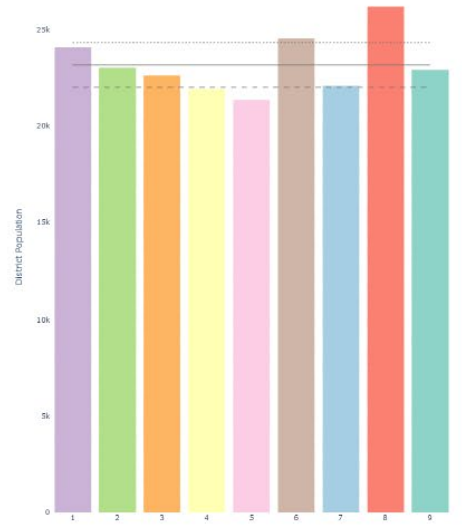
# Current Plan



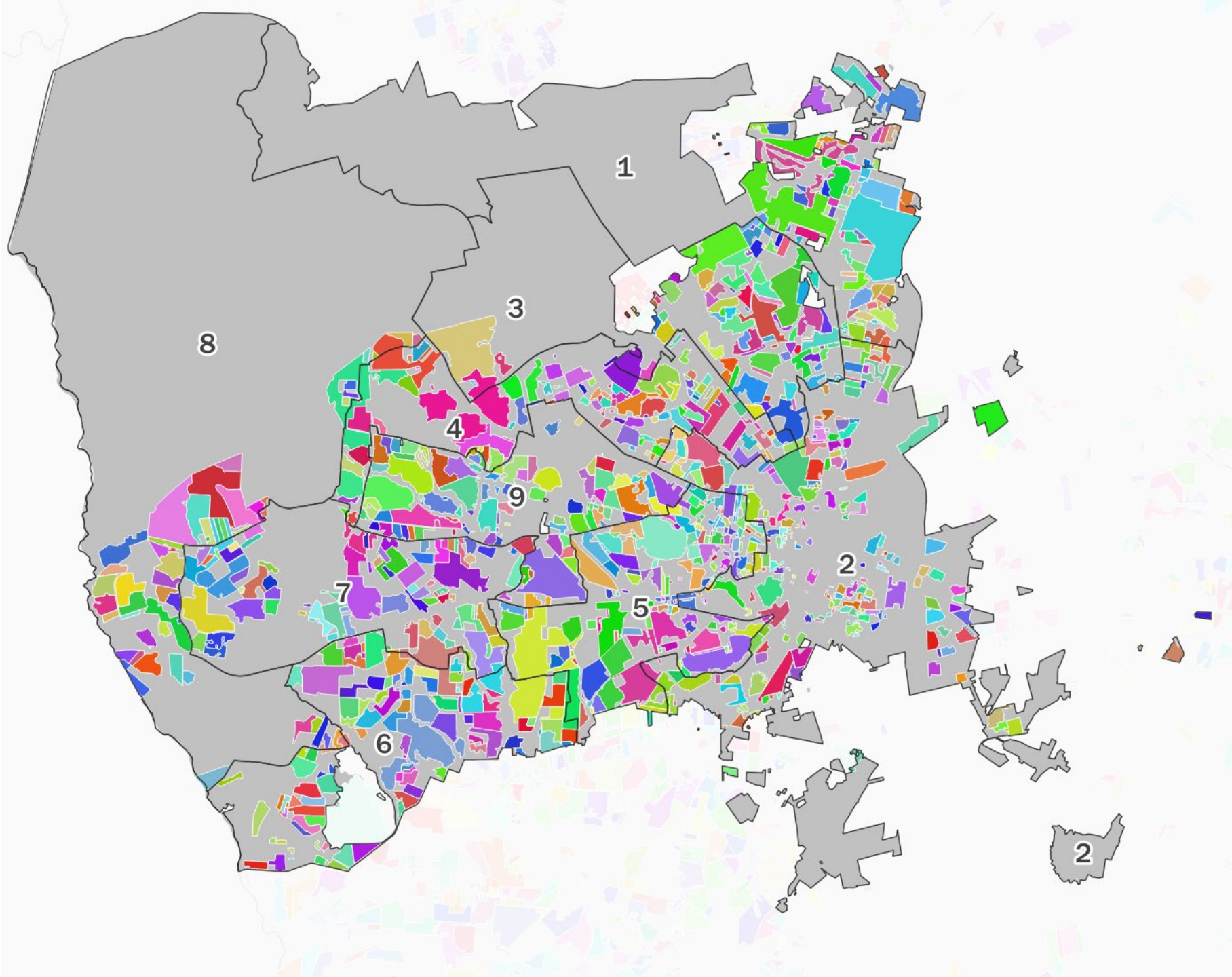
Council Districts

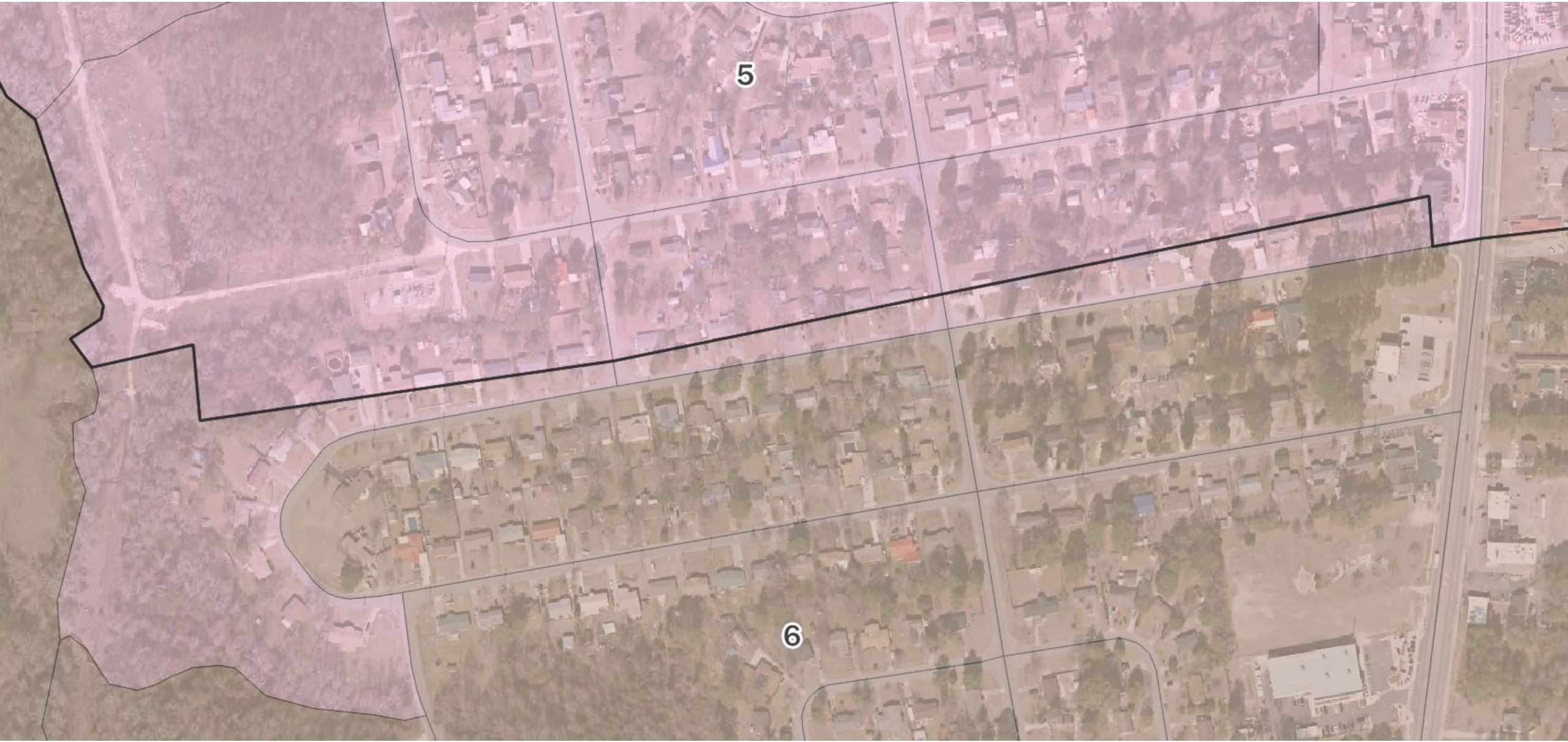
1	5
2	6
3	7
4	8
	9

Ideal district population: 23,167  
 Permissible population range: 22,009 to 24,326



Map by Blake Esselstyn for the Local Redistricting Service.  
 Demographic statistics available in separate table.  
 Basemap rendering by Stamen Design, under CC BY 3.0.  
 Basemap features by OpenStreetMap, under ODbL.  
 Map created September 16, 2021.





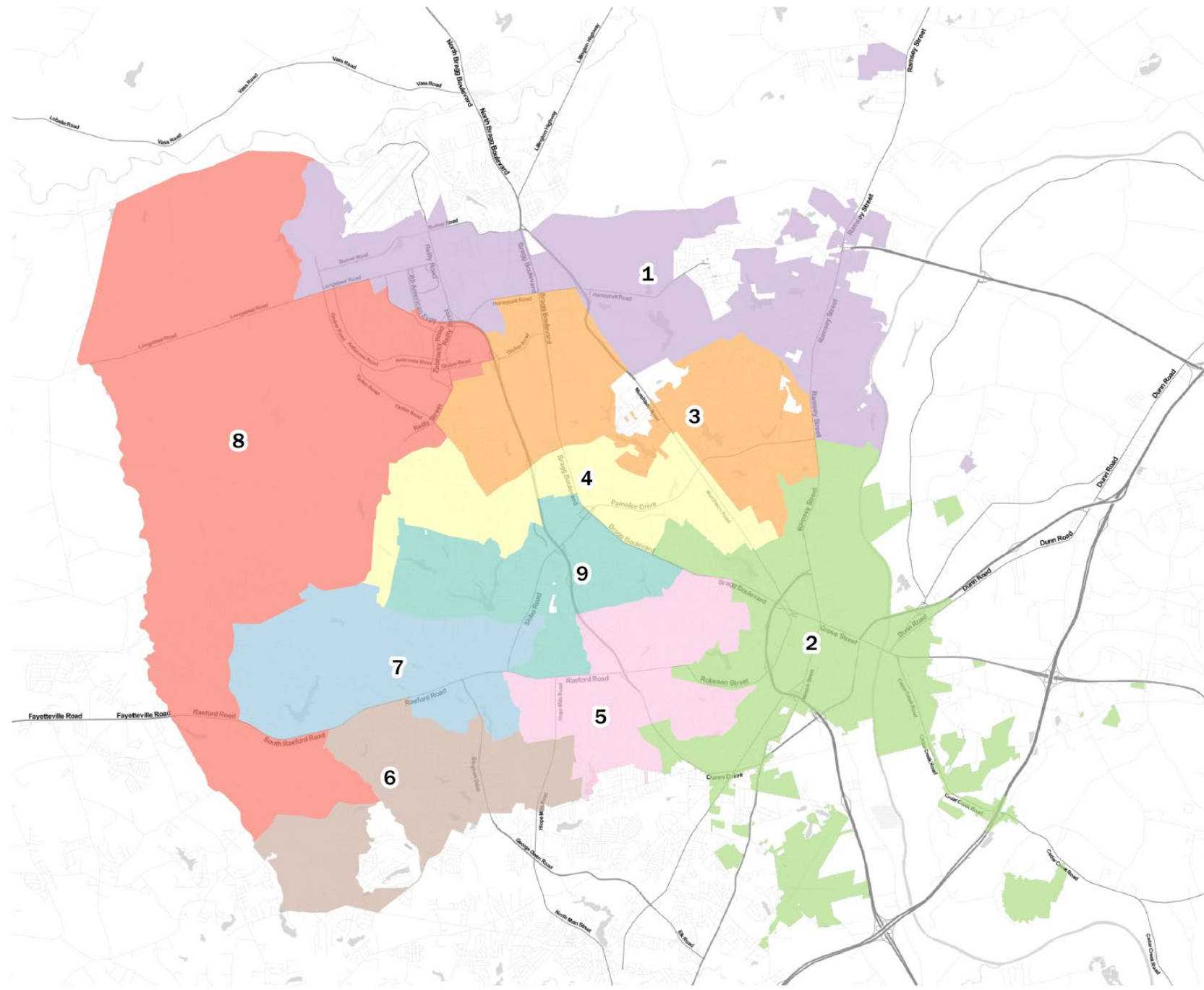
5

6



City of Fayetteville  
 Redistricting 2021  
 Existing Council Districts

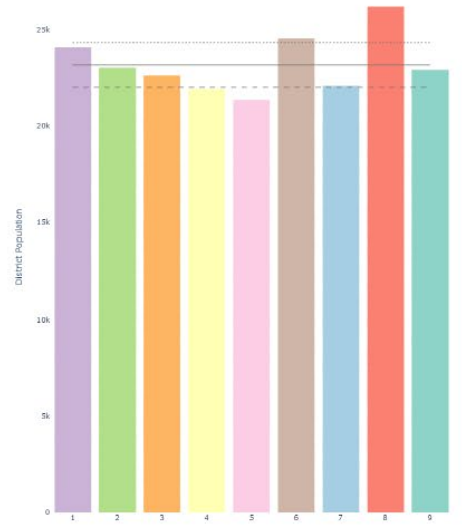
# Current Plan



Council Districts

1	5
2	6
3	7
4	8
	9

Ideal district population: 23,167  
 Permissible population range: 22,009 to 24,326

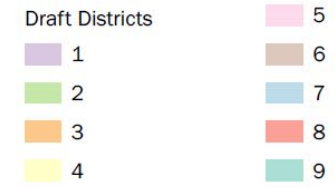


Map by Blake Esselstyn for the Local Redistricting Service.  
 Demographic statistics available in separate table.  
 Basemap rendering by Stamen Design, under CC BY 3.0.  
 Basemap features by OpenStreetMap, under ODbL.  
 Map created September 16, 2021.

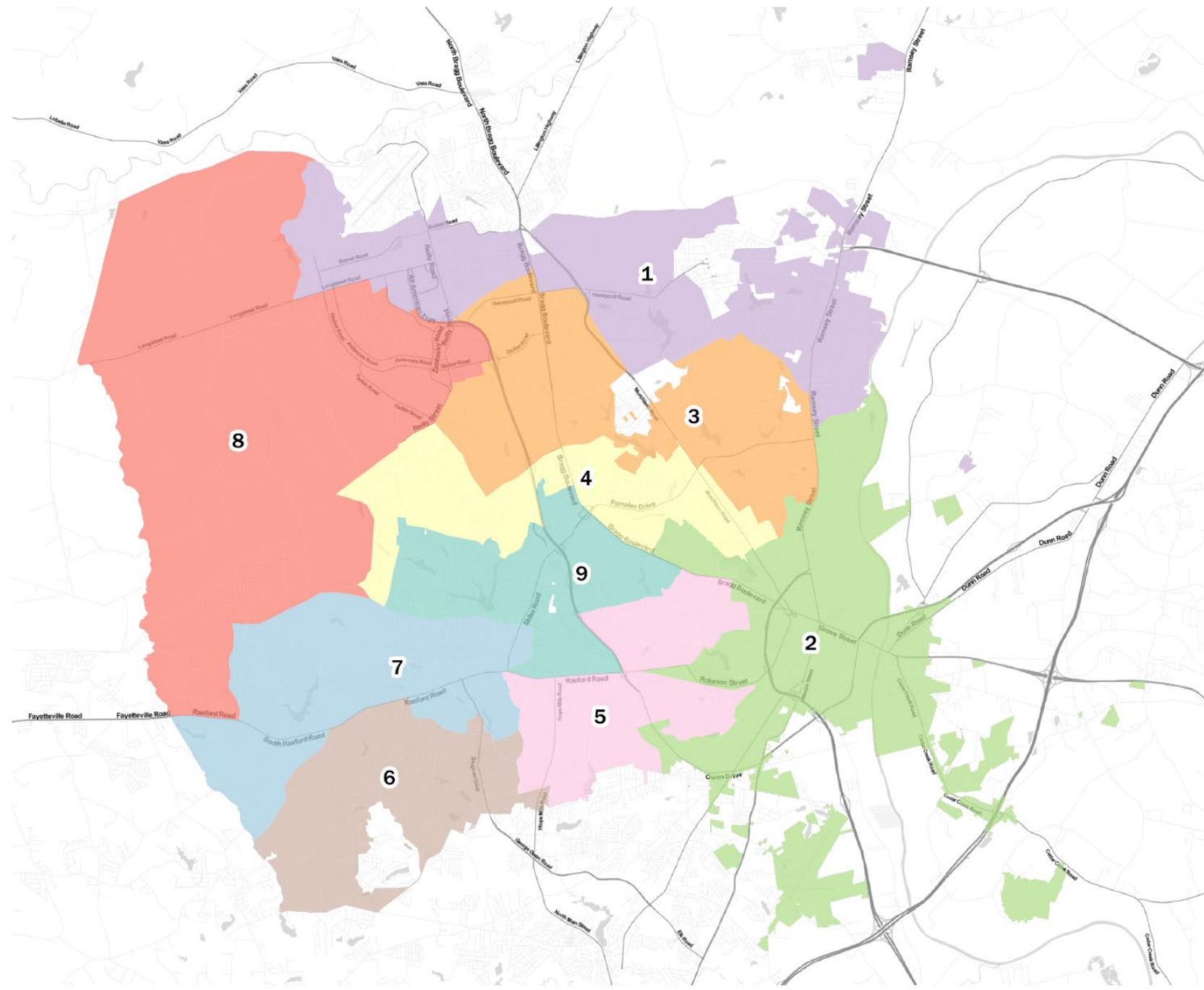
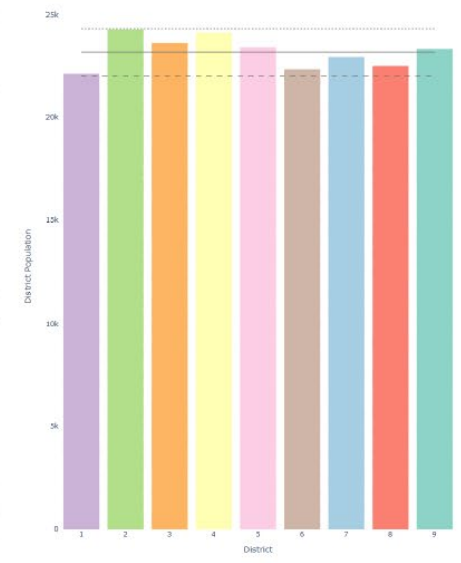


City of Fayetteville  
 Redistricting 2021  
 DRAFT Council Districts

# Option A



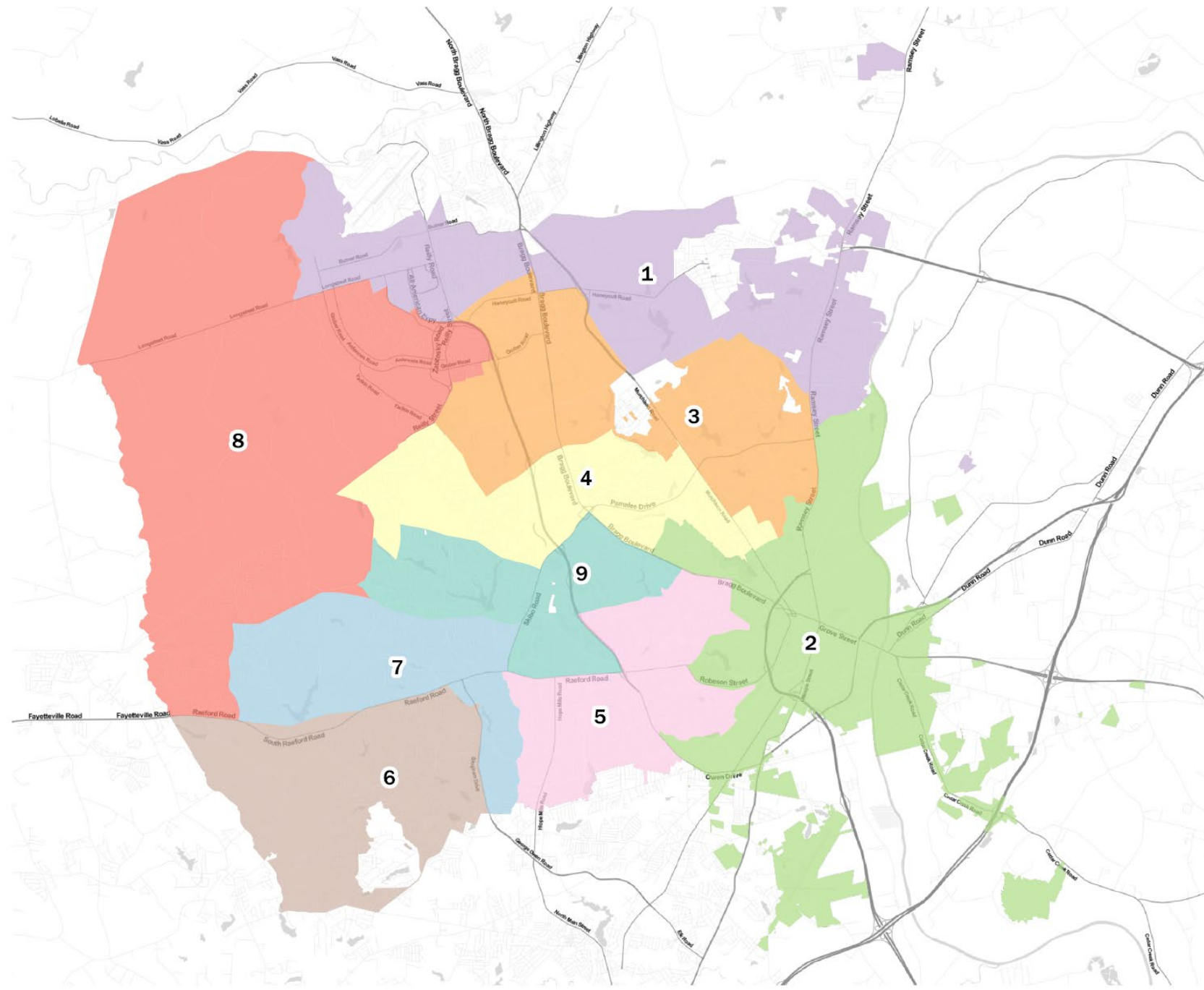
Ideal district population: 23,167  
 Permissible population range: 22,009 to 24,326



Map by Blake Esselstyn for the Local Redistricting Service.  
 Demographic statistics available in separate table.  
 Basemap rendering by Stamen Design, under CC BY 3.0.  
 Basemap features by OpenStreetMap, under ODbL.  
 Draft created September 16, 2021.

City of Fayetteville  
 Redistricting 2021  
 DRAFT Council Districts

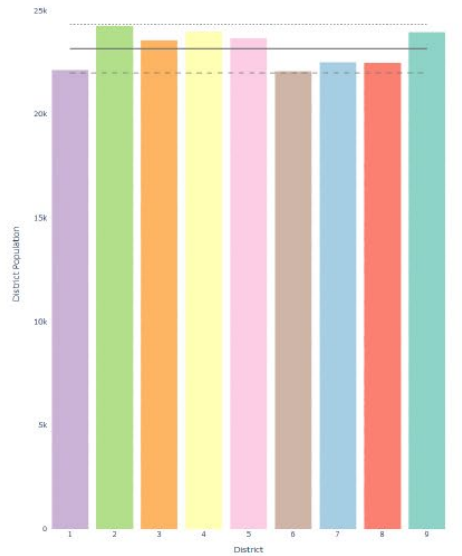
# Option B



Draft Districts

1	5
2	6
3	7
4	8
	9

Ideal district population: 23,167  
 Permissible population range: 22,009 to 24,326



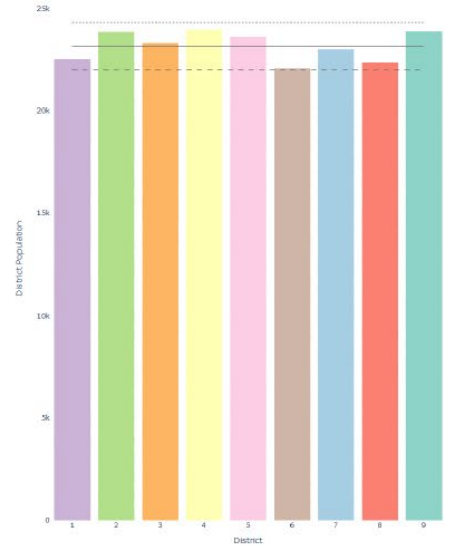
Map by Blake Esselstyn for the Local Redistricting Service.  
 Demographic statistics available in separate table.  
 Basemap rendering by Stamen Design, under CC BY 3.0.  
 Basemap features by OpenStreetMap, under ODbL.  
 Draft created September 16, 2021.

City of Fayetteville  
 Redistricting 2021  
 DRAFT Council Districts

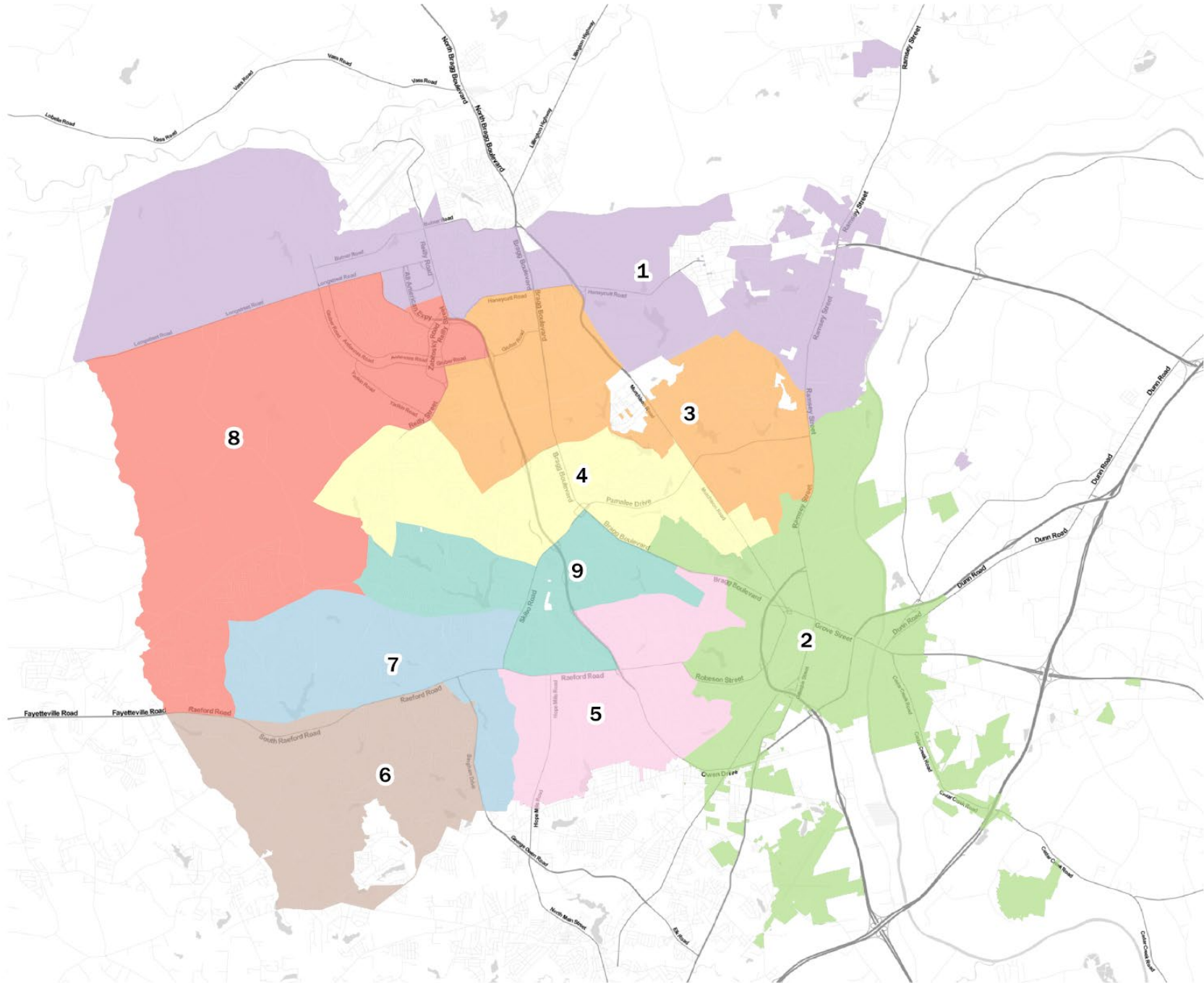
# Option C



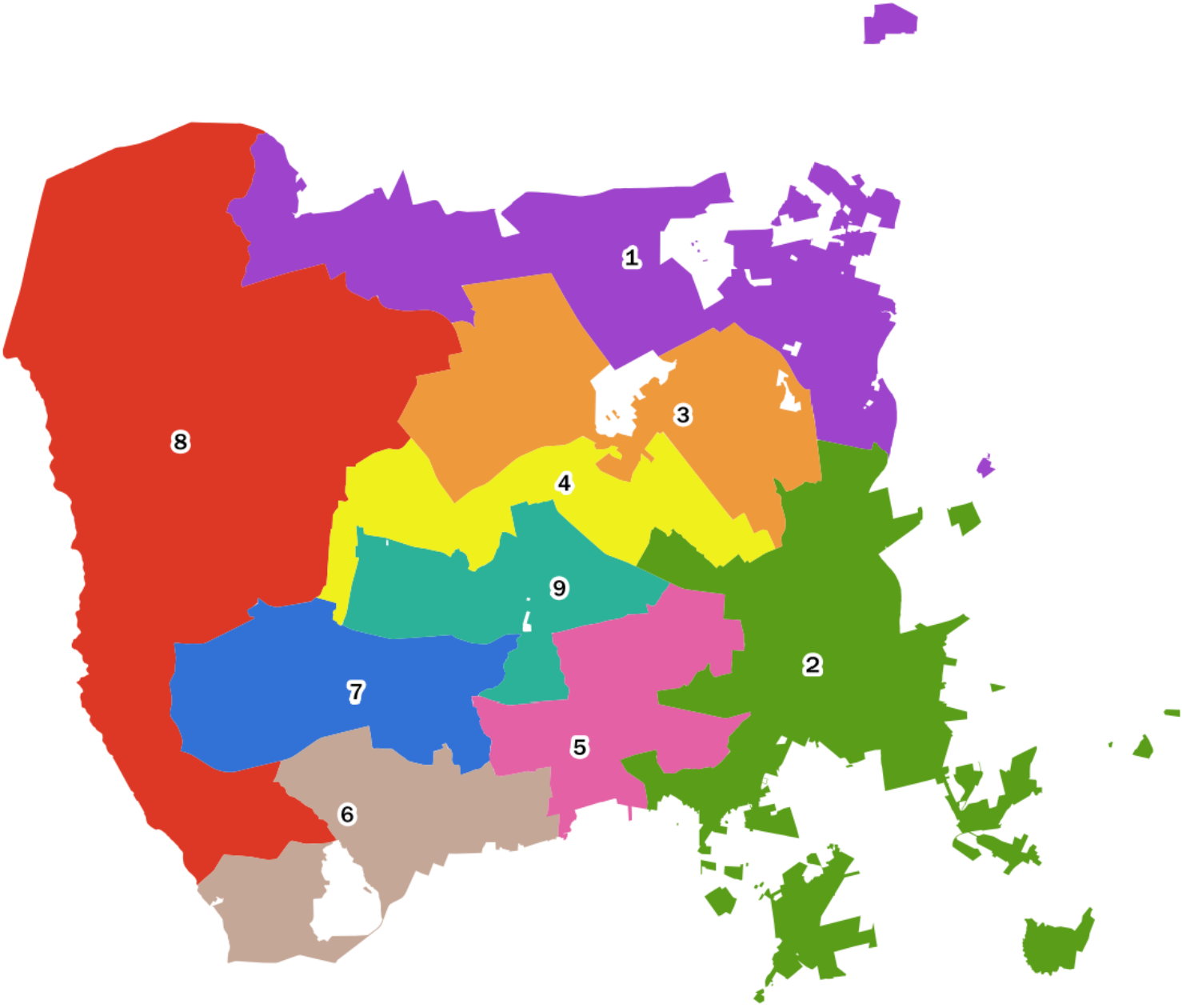
Ideal district population: 23,167  
 Permissible population range: 22,009 to 24,326



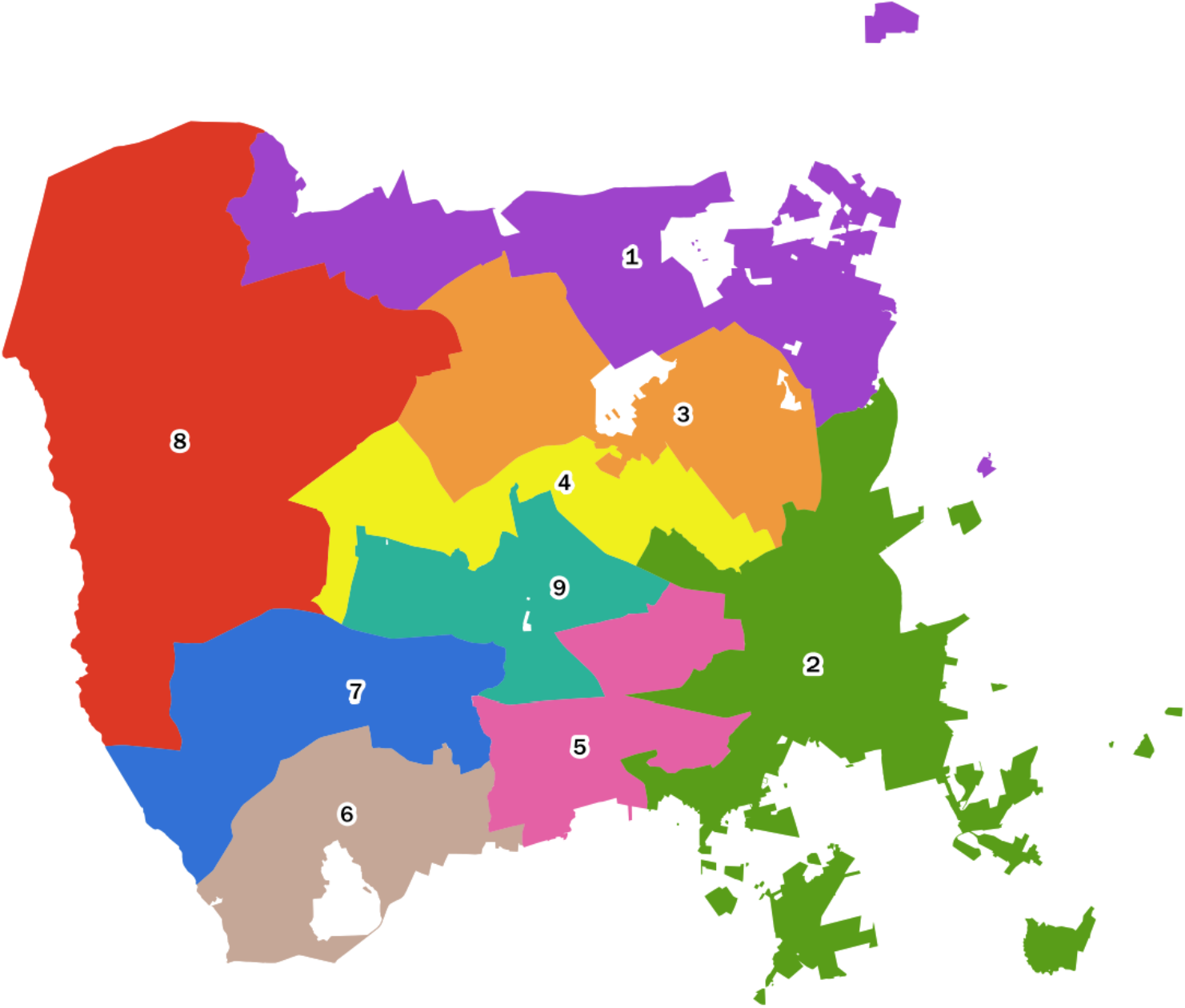
Map by Blake Esselstyn for the Local Redistricting Service.  
 Demographic statistics available in separate table.  
 Basemap rendering by Stamen Design, under CC BY 3.0.  
 Basemap features by OpenStreetMap, under ODbL.  
 Draft created September 16, 2021.



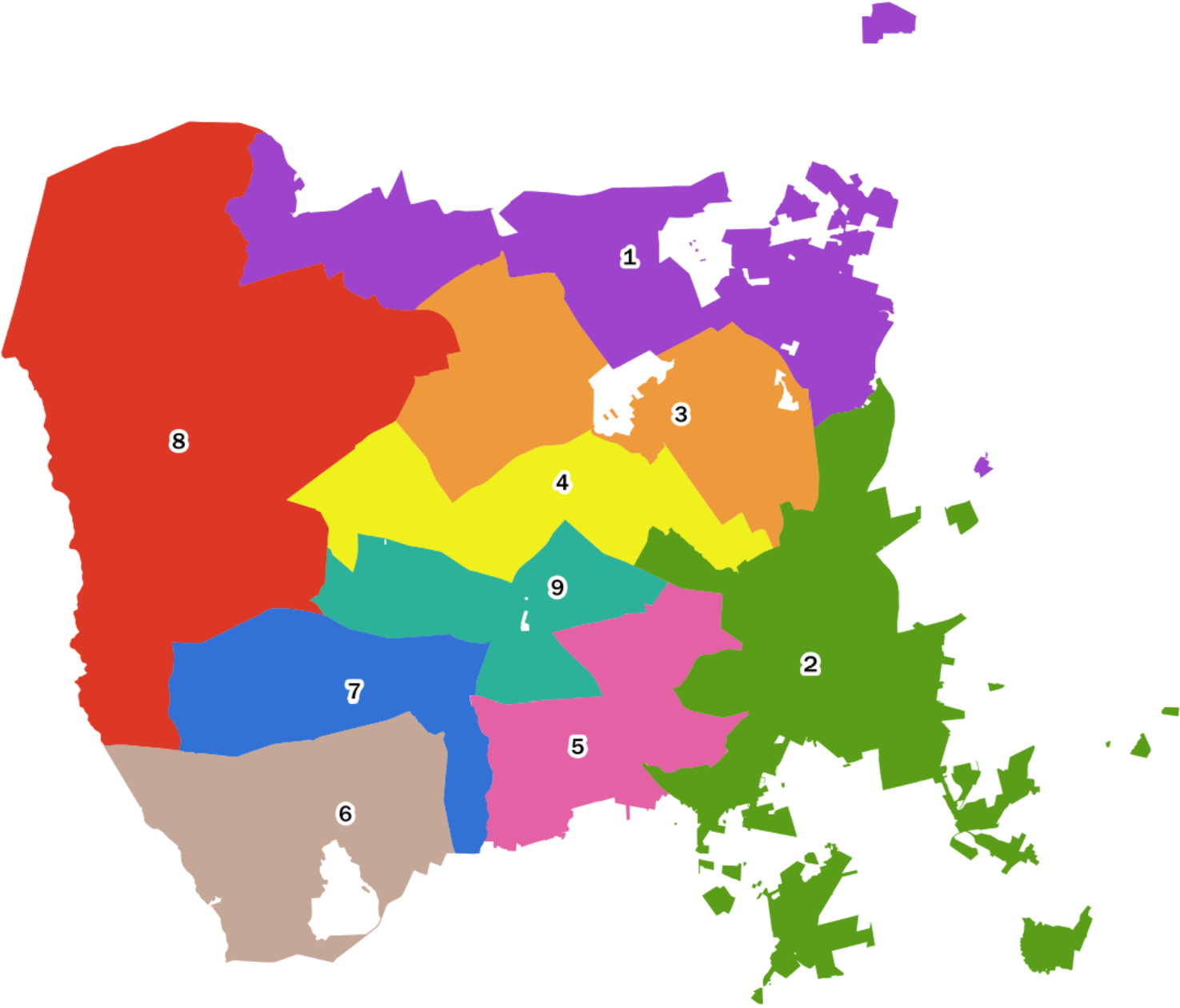
# Existing



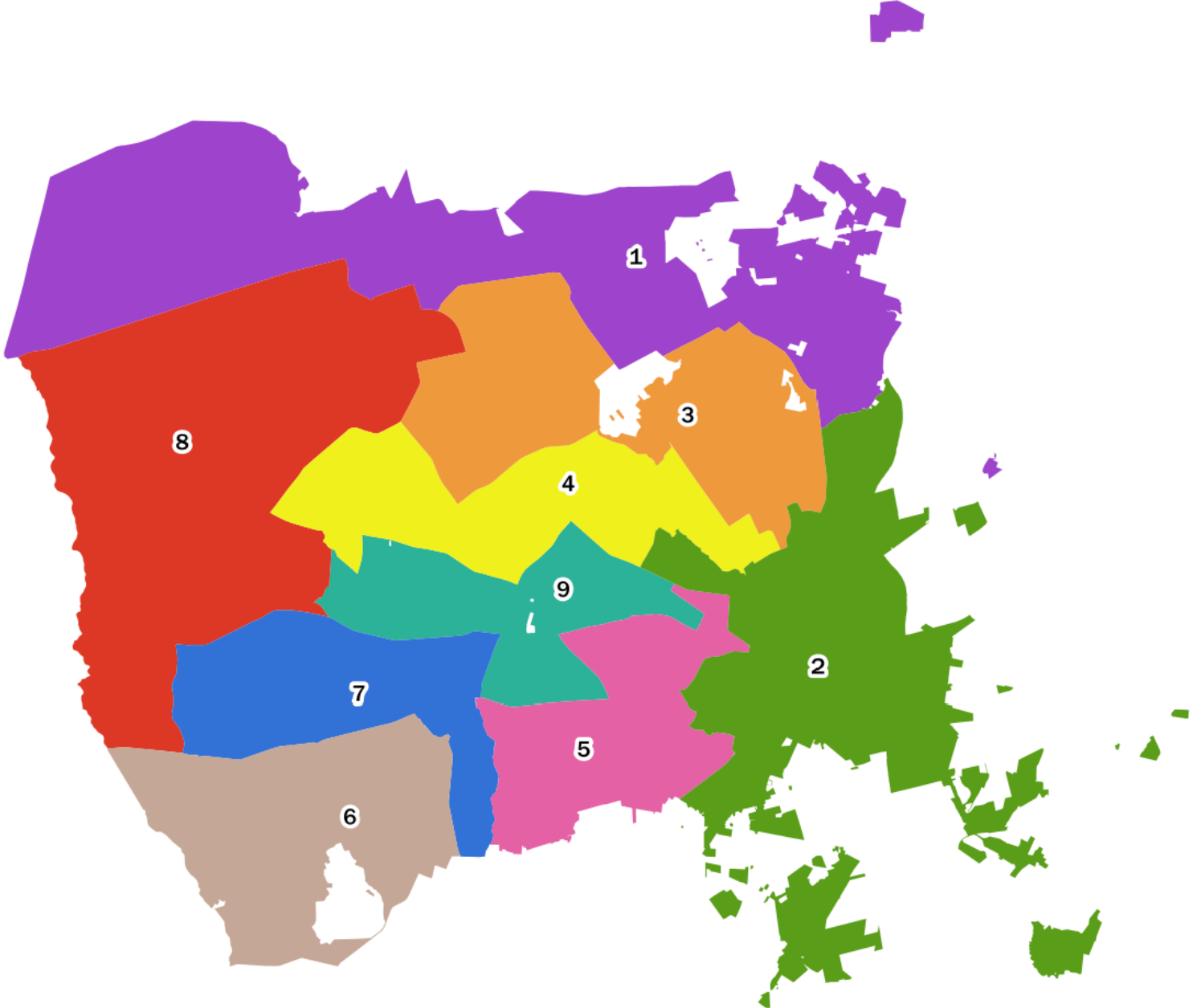
# Option A



# Option B



# Option C



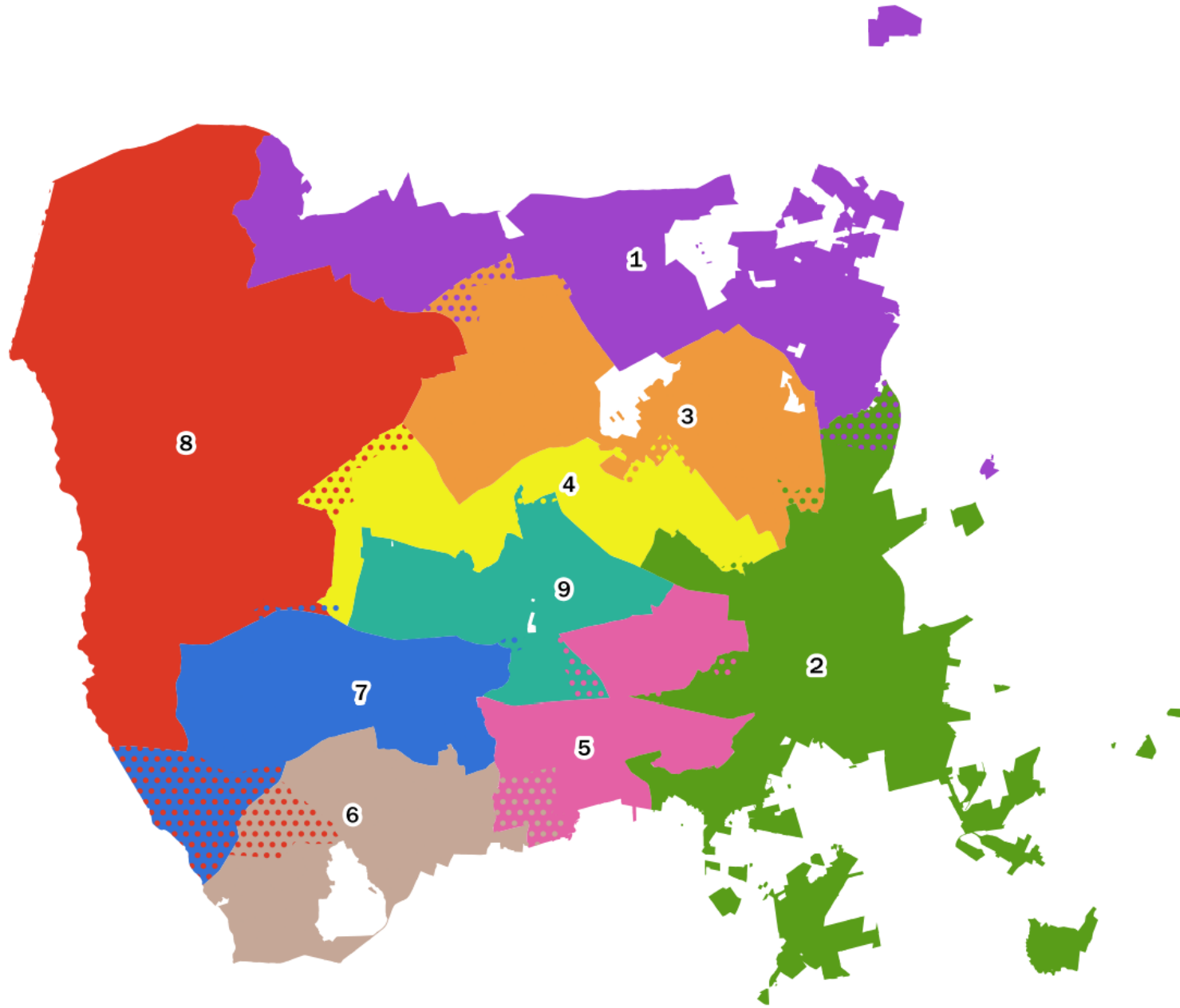
City of Fayetteville  
Redistricting 2021  
DRAFT Council Districts

# Option A with Change

Solids represent  
proposed district

Dots represent existing  
district

If no dots visible, the  
area is unchanged





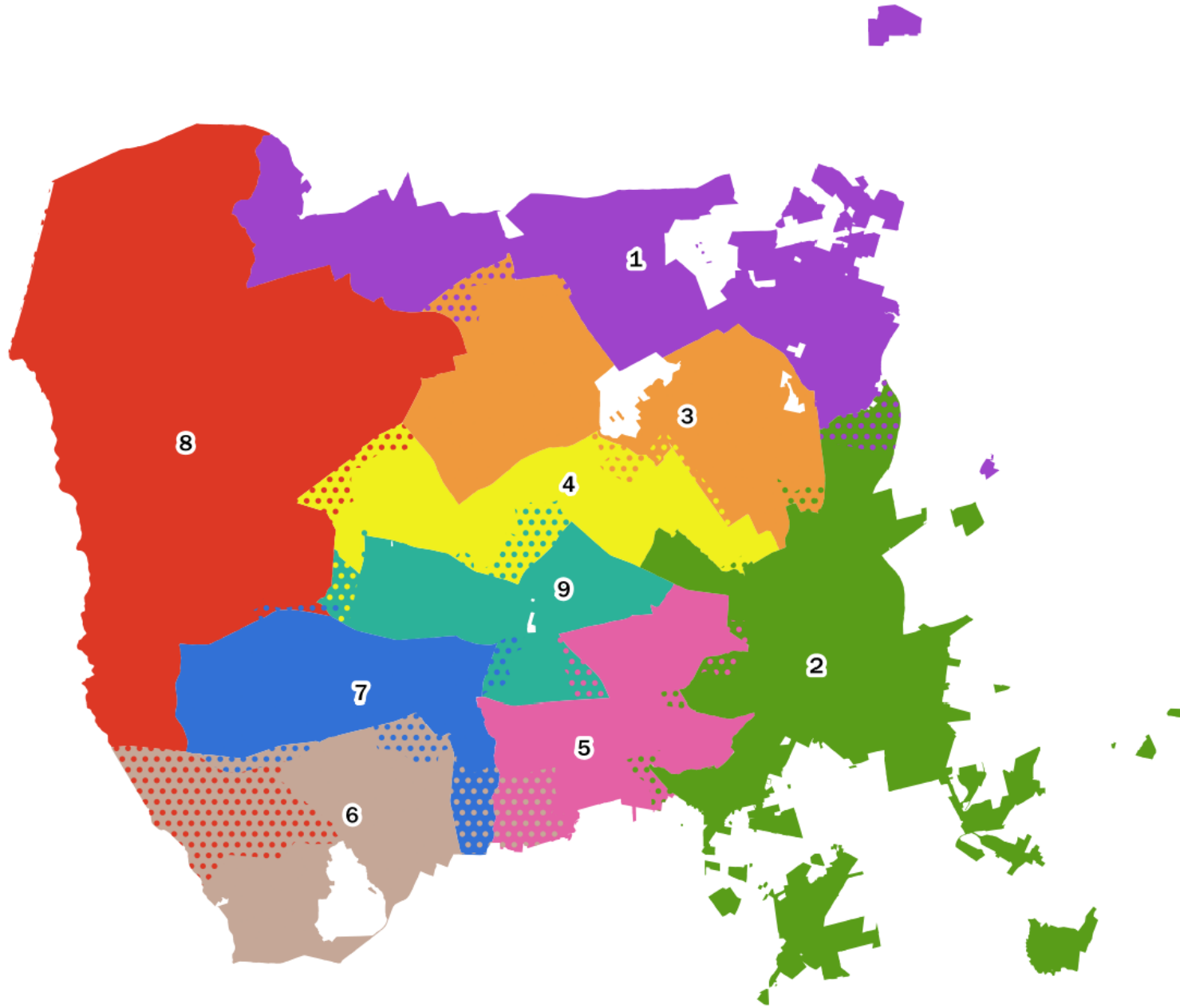
City of Fayetteville  
Redistricting 2021  
DRAFT Council Districts

# Option B with Change

Solids represent  
proposed district

Dots represent existing  
district

If no dots visible, the  
area is unchanged



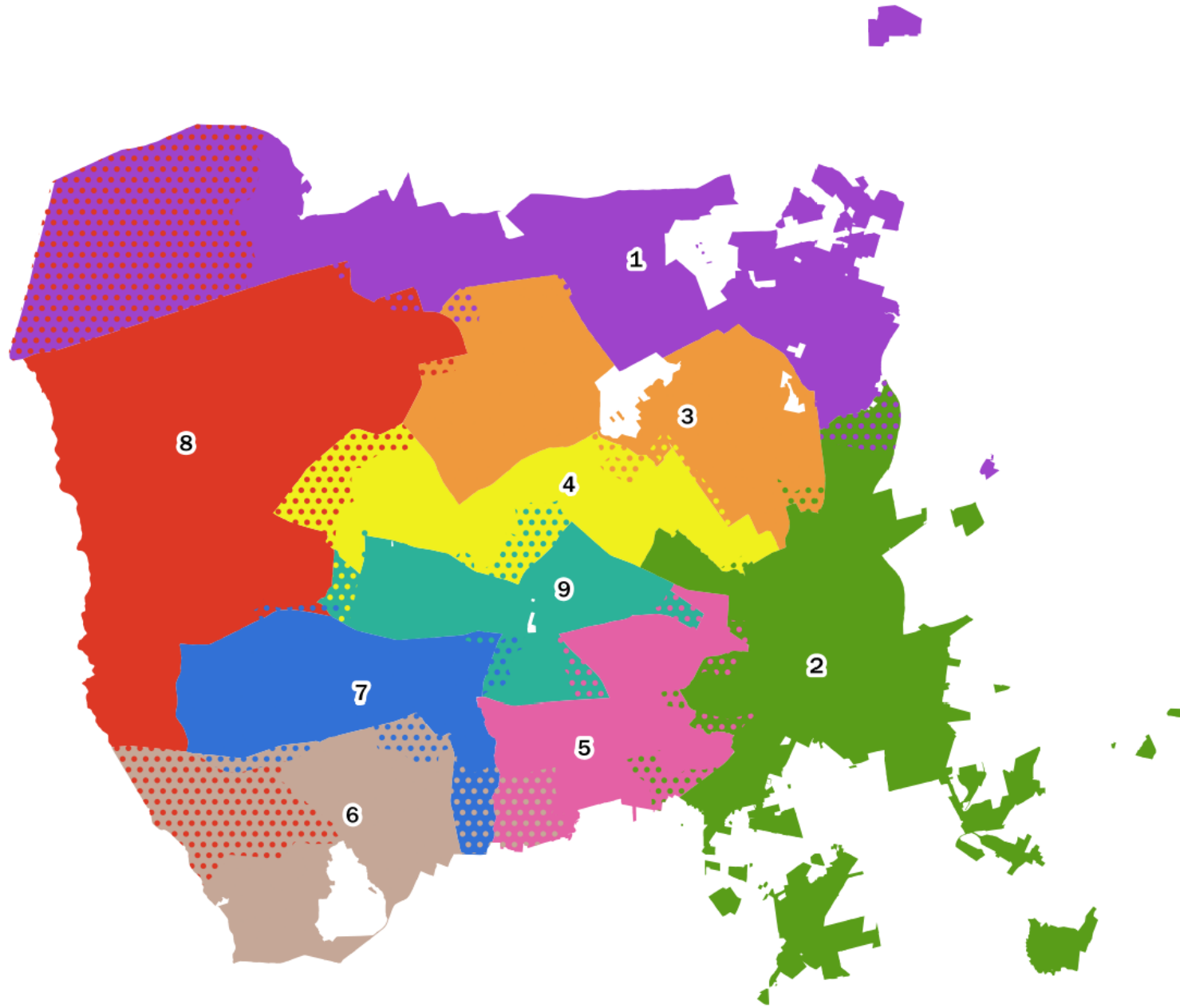
City of Fayetteville  
Redistricting 2021  
DRAFT Council Districts

# Option C with Change

Solids represent  
proposed district

Dots represent existing  
district

If no dots visible, the  
area is unchanged



Statistics (based on 2020 Census) for draft City of Fayetteville redistricting plans

Plan	District	Population	Population Deviation	Percent Deviation	Demographics of Total Population							
					% White	% Black or African American	% American Indian or Alaska Native	% Asian	% Native Hawaiian or Pacific Islander	% Other Race	% Multi-racial	% Hispanic or Latino
CURRENT PLAN	1	24,031	864	3.73%	49.72%	30.02%	0.80%	3.77%	0.65%	4.59%	10.44%	13.82%
	2	22,996	-171	-0.74%	29.98%	56.29%	2.06%	1.09%	0.18%	2.91%	7.49%	7.51%
	3	22,604	-563	-2.43%	30.77%	51.42%	0.88%	2.40%	0.49%	5.17%	8.86%	12.25%
	4	21,899	-1268	-5.47%	23.59%	56.49%	0.80%	3.40%	0.55%	5.01%	10.16%	11.93%
	5	21,326	-1841	-7.95%	59.50%	21.92%	1.56%	4.35%	0.24%	3.23%	9.20%	8.96%
	6	24,533	1366	5.90%	38.79%	39.28%	1.43%	3.79%	0.41%	5.11%	11.19%	12.87%
	7	22,069	-1098	-4.74%	23.30%	56.60%	1.49%	2.53%	0.66%	5.95%	9.47%	13.47%
	8	26,164	2997	12.94%	40.34%	37.16%	1.04%	3.13%	0.67%	6.65%	11.02%	17.97%
	9	22,879	-288	-1.24%	39.04%	39.21%	1.08%	4.26%	0.62%	5.47%	10.32%	13.54%
OPTION A	1	22,096	-1071	-4.62%	49.85%	29.88%	0.81%	3.82%	0.62%	4.49%	10.54%	13.65%
	2	24,268	1101	4.75%	31.00%	55.10%	2.01%	1.13%	0.19%	3.00%	7.57%	7.60%
	3	23,611	444	1.92%	31.83%	50.17%	0.87%	2.49%	0.55%	5.21%	8.87%	12.68%
	4	24,115	948	4.09%	24.96%	54.98%	0.83%	3.50%	0.60%	5.00%	10.13%	12.19%
	5	23,394	227	0.98%	57.45%	24.00%	1.71%	3.50%	0.25%	3.71%	9.38%	9.56%
	6	22,318	-849	-3.66%	38.04%	39.98%	1.27%	3.97%	0.43%	4.96%	11.35%	12.97%
	7	22,928	-239	-1.03%	24.08%	56.01%	1.48%	2.49%	0.64%	5.90%	9.41%	13.36%
	8	22,463	-704	-3.04%	40.45%	36.91%	1.02%	3.10%	0.65%	6.93%	10.93%	18.49%
	9	23,308	141	0.61%	39.42%	38.18%	1.06%	4.85%	0.60%	5.35%	10.52%	13.40%
OPTION B	1	22,096	-1071	-4.62%	49.85%	29.88%	0.81%	3.82%	0.62%	4.49%	10.54%	13.65%
	2	24,238	1071	4.62%	31.58%	54.64%	1.96%	1.15%	0.19%	3.00%	7.49%	7.54%
	3	23,558	391	1.69%	31.48%	50.51%	0.87%	2.49%	0.54%	5.23%	8.88%	12.73%
	4	23,975	808	3.49%	26.75%	52.96%	0.94%	3.72%	0.61%	4.87%	10.14%	12.08%
	5	23,662	495	2.14%	56.77%	24.56%	1.77%	3.47%	0.27%	3.71%	9.46%	9.66%
	6	22,062	-1105	-4.77%	37.62%	40.51%	1.42%	3.84%	0.42%	4.62%	11.56%	12.72%
	7	22,503	-664	-2.87%	24.57%	55.29%	1.29%	2.67%	0.64%	6.27%	9.27%	13.67%
	8	22,463	-704	-3.04%	40.45%	36.91%	1.02%	3.10%	0.65%	6.93%	10.93%	18.49%
	9	23,944	777	3.35%	37.40%	40.61%	0.99%	4.54%	0.58%	5.45%	10.43%	13.39%
OPTION C	1	22,482	-685	-2.96%	49.94%	29.84%	0.80%	3.87%	0.65%	4.52%	10.37%	13.74%
	2	23,859	692	2.99%	33.19%	52.69%	1.99%	1.34%	0.18%	2.92%	7.69%	7.60%
	3	23,290	123	0.53%	31.03%	50.84%	0.90%	2.55%	0.49%	5.48%	8.72%	12.85%
	4	23,975	808	3.49%	26.75%	52.96%	0.94%	3.72%	0.61%	4.87%	10.14%	12.08%
	5	23,605	438	1.89%	54.36%	27.28%	1.74%	3.29%	0.28%	3.82%	9.24%	9.60%
	6	22,062	-1105	-4.77%	37.62%	40.51%	1.42%	3.84%	0.42%	4.62%	11.56%	12.72%
	7	23,000	-167	-0.72%	24.57%	55.36%	1.30%	2.68%	0.62%	6.19%	9.28%	13.70%
	8	22,345	-822	-3.55%	40.56%	36.88%	1.01%	2.96%	0.67%	6.66%	11.25%	18.30%
	9	23,883	716	3.09%	38.38%	39.69%	0.99%	4.50%	0.59%	5.44%	10.41%	13.27%



# Online Resources

- **Interactive Map**  
at <https://arcg.is/18mb80>
- **Atlases of Draft Districts**  
at [https://1drv.ms/u/s!AtDP5vd7RsnumjWzXq-gd4\\_BytMA?e=PmYKcr](https://1drv.ms/u/s!AtDP5vd7RsnumjWzXq-gd4_BytMA?e=PmYKcr)



# Next Steps

- **Public Input**
- **Public Hearing: October 11**
- **Final adoption: October 27**
- **Deadline for submission of adopted plan:  
November 17**
- **Filing period: December 6 – December 17**



**Discourse**

# Questions/Discussion