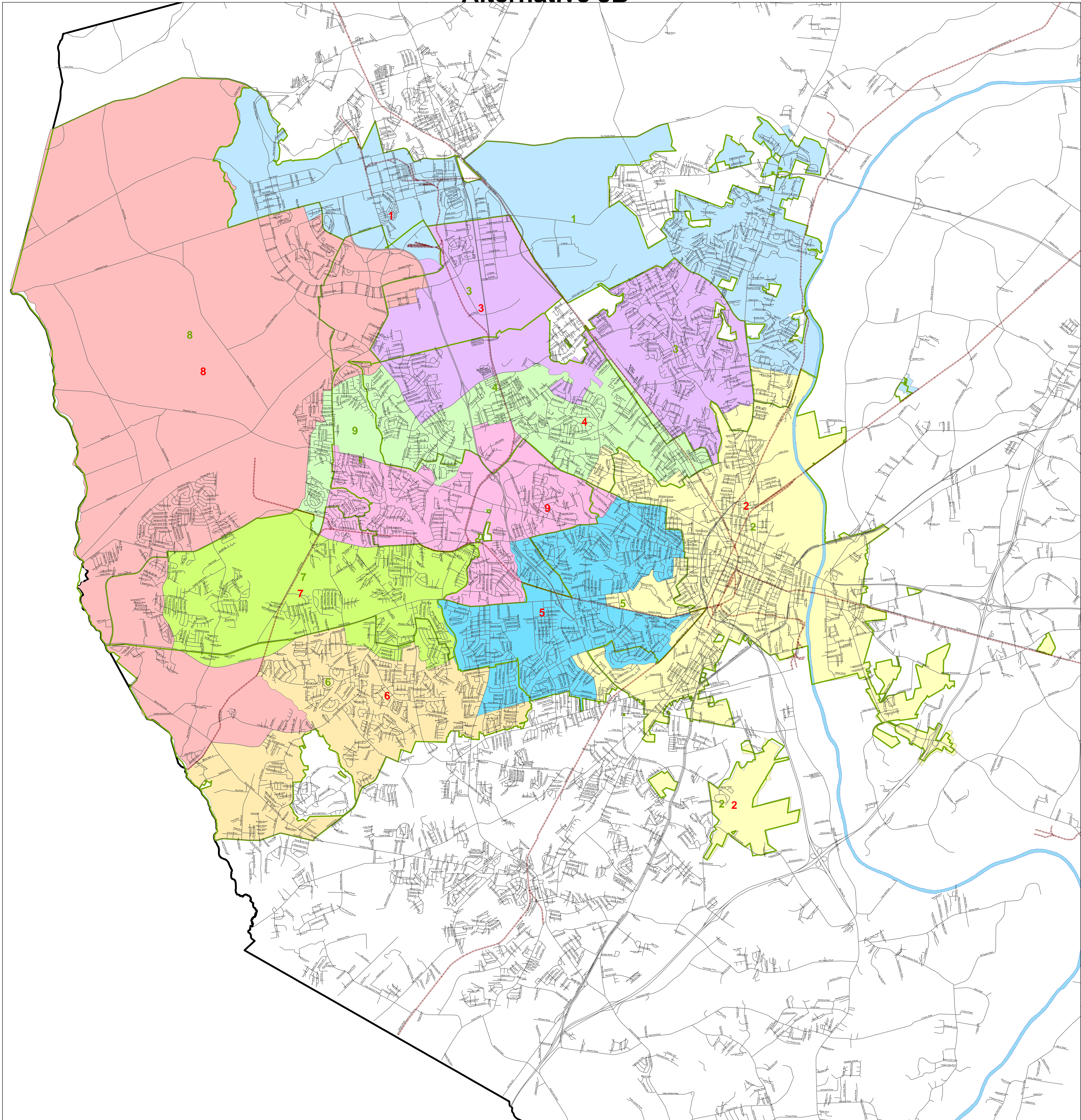


# Redistricting After the 2010 Census Alternative 3B



— Streets (Based on Census Bureau's LUCA "AllLines" File)  
 - - - Railroads (Based on Census Bureau's LUCA "AllLines" File)  
 — Current District Boundaries (13D)  
 — Cape Fear River  
**Fayetteville Alt3B**  
**DISTRICT**  
 1  
 2  
 3  
 4  
 5  
 6  
 7  
 8  
 9  
 — Cumberland County Boundary

Notes:  
 (1) The boundaries of the part of Fort Bragg annexed into Fayetteville are based on the description in Section 1 of HB 2414. Digitized on 9/5/08 by staff of Fayetteville Planning Department.  
 (3) Map printed on 4/15/11 by Fayetteville Planning Department.

