

UNCLASSIFIED

# 96th Civil Affairs Battalion (Airborne)



## COMMUNITY ENGAGEMENT TRAINING

UNCLASSIFIED



# AGENDA

---

- 96<sup>th</sup> Civil Affairs Battalion (Airborne): CPT Cristopher Harwell

## C/96<sup>th</sup> Civil Affairs Battalion (Airborne)

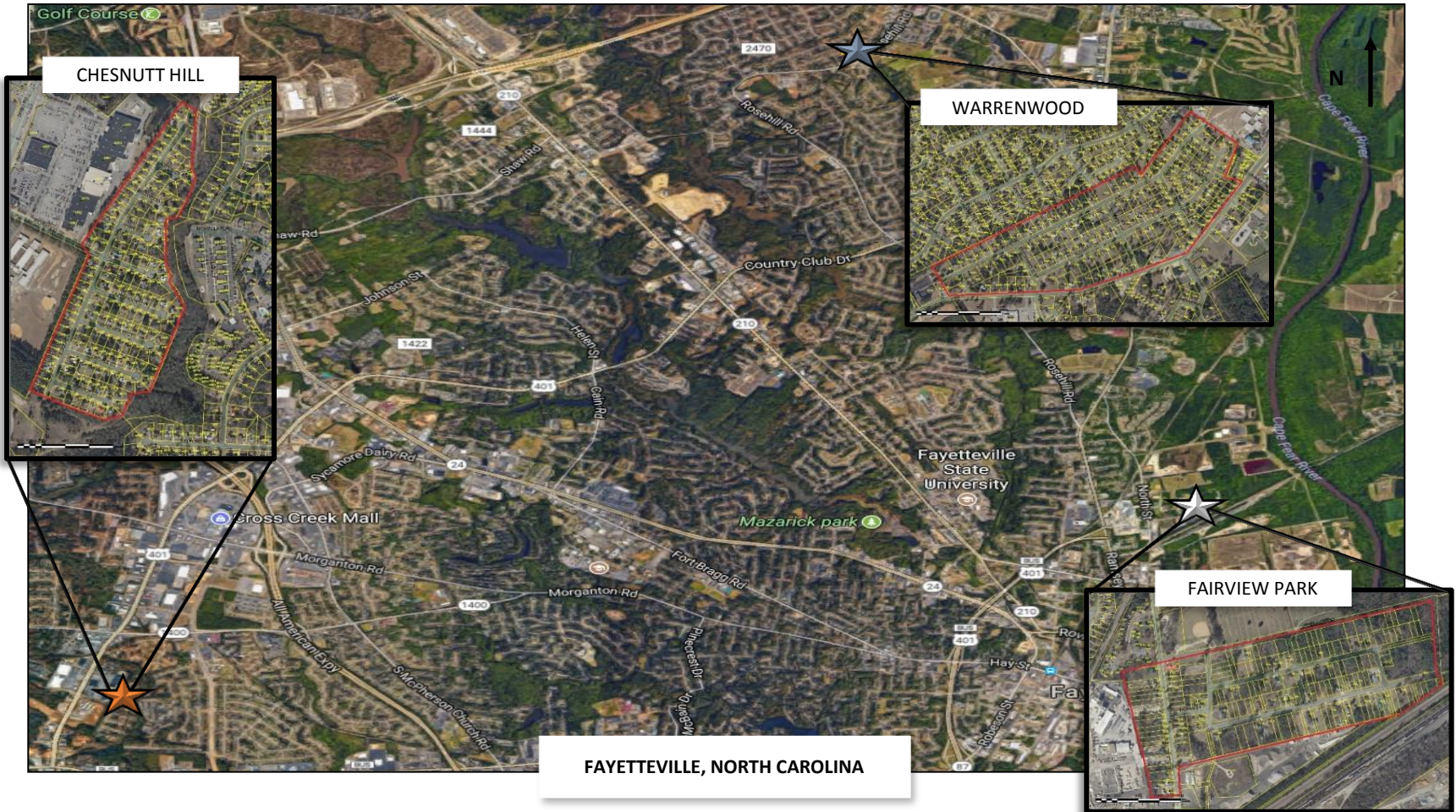
- Stormwater Overview: SSG Abigail Sandling
- Fairview Park: CPT Pete Reider
- Chesnutt Hill: SSG Victor DaSilva
- Warrenwood: CPT Andrea Filozof and SSG Samuel Fye

## B/96<sup>th</sup> Civil Affairs Battalion (Airborne)

- Downtown Development Overview: CPT Joseph Janke
- Future Baseball Stadium: CPT Jordan Martin
- Development Impacts on Traffic and Safety: CPT John Gibbons
- Multimodal Traffic Center: CPT James White
- Skate Park Impacts: CPT Joshua Smithers
  
- Questions
  
- Closing

# C/Co 96th Civil Affairs Battalion (Airborne)

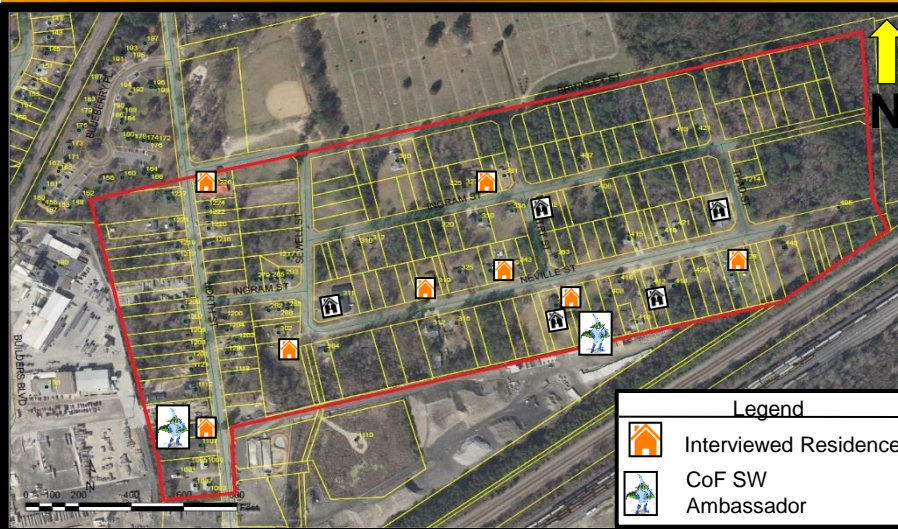
## AREA OF OPERATIONS







# FAIRVIEW PARK



**Neighborhood Characteristics:** Fairview Park is a low socioeconomic neighborhood with several abandoned residencies. It is perceived that stormwater infrastructure in the area is outdated and inadequate. Interviewed residents of Fairview Park express concerns that the city does not properly manage storm water systems in their area.

**Engagements:** 10

- Fire Station 3
- Fire Station 14
- New Life Covenant Church
- Residents of the neighborhood

**Surveys and Flyers:**

- 3 Surveys Completed
- 5 surveys awaiting completion
- 25 Stormwater Ambassador Program pamphlets distributed

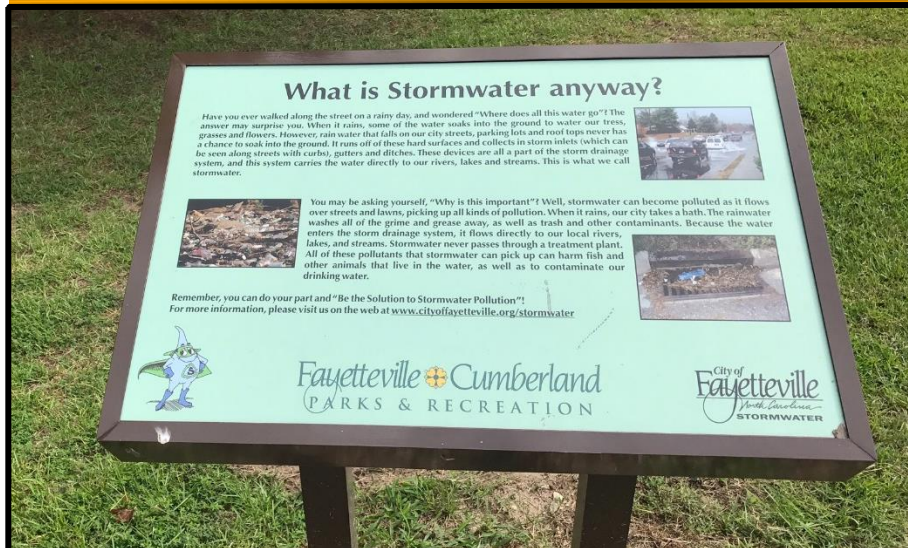
## Recommendations

1. Utilize community centers and churches for Stormwater educational outreach programs.
2. Coordinate with additional city of Fayetteville Departments for Stormwater management efforts:
  - Fire Department to provide historic data on flooding
  - Parks and Recreation for placement of Stormwater gauges
3. Place educational plaques on rainfall gauges (when installed)
  - Provide advanced education on Stormwater
4. Have Stormwater representatives at city meetings pertaining to flood damage, dam repair, and Public Works projects that:
  - Provide additional opportunities for Stormwater education
  - Provide platforms for representatives to respond to budget and project queries
5. Provide mail-in surveys for residents
  - Older residents prefer to have an in hand survey vs. electronic





# FAIRVIEW PARK







# CHESNUTT HILLS



**Neighborhood Characteristics:** Predominately middle class, retired African American residents. Area is located southeast of a high volume shopping center. Beaver Creek runs along the south, east and north side of the neighborhood. There is new construction on the far side of the creek. 156 homes are located in the area. The majority of the homes were built between 1967 and 1970.

**Storm Water Surveys Completed:** 9

**Engagements:** 13

**Homes approached:** 36

Seven of nine residents agreed to participate in the Stormwater Ambassador Program. These residents are amenable to allow the city access to their property for installation of rain gauges and data collection.

## Recommendations

**1. City of Fayetteville Stormwater Division representatives attend bi-monthly Neighborhood Watch meetings.**

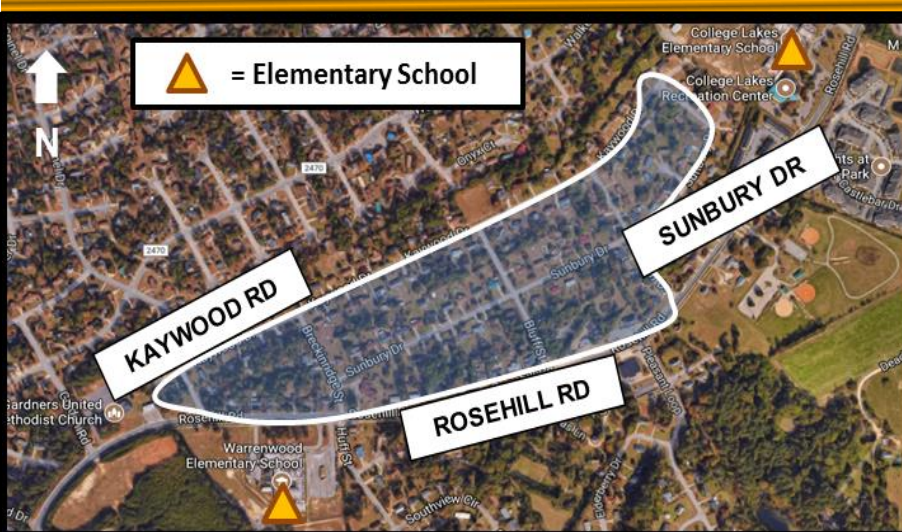
- Provide information and education of Stormwater solutions

**2. Utilize small projects/ construction within the area to improve water damage caused by storm water runoff into the creek.**

- Construct drainage systems within the community to collect storm water after heavy rainfall.
- Erect a barrier that would allow drainage behind the houses to prevent water damage.



# WARRENWOOD



**Neighborhood Characteristics:** The Warrenwood area contains mainly older residents past retirement age. Most residents were willing to openly discuss issues with the team. Residents on the western edge cited few problems with flooding or storm water. Residents on the eastern side reported consistent problems with excess storm water, claiming that the issue has worsened since the construction of the College Lakes Recreation Center and pool.

#### Surveys Completed: 9

- CAT 631 visited approximately 25 homes throughout the neighborhood
- 10 homes had no occupants present
- 6 homes declined to answer the survey
- 9 homeowners actively participated
- 5 sites were willing to consider Stormwater gauge installation

#### Engagements: 4

- Two elementary schools (College Lakes and Warrenwood)
- College Lakes Recreation Center
- Fayetteville Christian Church

## Recommendations

### 1. Install storm water gauges at local schools

- Coordinate with the city Stormwater educator, Ms. Haslem, to speak with students about the project
- Partner with fifth grade science classes to collect data

**Goal: Promote community involvement and educate the community on Stormwater issues and resources**

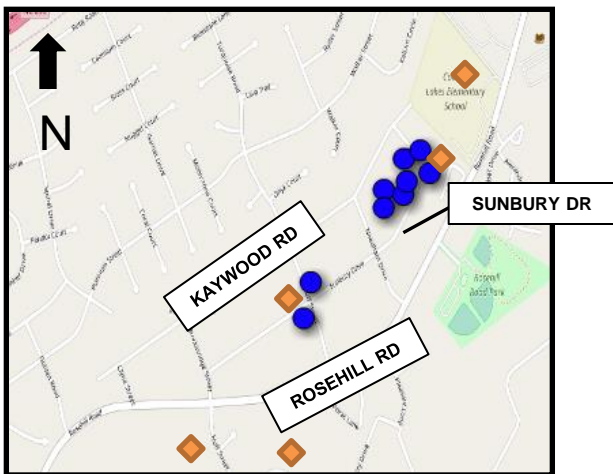
### 2. Hold quarterly or bi-annual community meetings

- Identify any new complaints or concerns from community residents
- Inform residents of any new construction projects or infrastructure repair
- Include representation from all city departments involved (e.g. Stormwater, PWC, Construction Management, etc.)

**Goal: Identify any additional planning considerations for new construction in the area, facilitate cross-talk between departments, and mitigate residents' concerns**



# WARRENWOOD



- Reported complaints of storm water problems
- ◆ Potential Stormwater gauge locations
  - College Lakes Elementary
  - 867 Elementary's 929 Sunbury Dr.
  - Warrenwood Elementary (T)
  - Fayetteville Christian Church



**Left:** CAT 631 team members



**Right:** CAT 631 speaks with Warrenwood Elementary's principal about installing a rain gauge





**B/Co 96th Civil Affairs Battalion (Airborne)**



# **CIVIL IMPACTS OF DOWNTOWN DEVELOPMENT**



# FUTURE BASEBALL STADIUM



Construction of the baseball stadium over the next two years will create many exciting opportunities and challenges which the City of Fayetteville can mitigate through shared understanding and planning.

Changes to vehicular and pedestrian traffic patterns will present potential crime, safety, and accessibility issues requiring coordinated efforts by all departments.







# RECOMMENDATIONS



## Create Shared Understanding

- Departments would benefit from common picture of the final stadium design and the plan for operation.
- Department input can mitigate design issues that will require greater commitment of resources during construction and operation.

## Control Movement Around Stadium

- Pedestrian footbridges allow bypass to traffic chokepoints.
- Construction of median on Hay Street will direct pedestrian traffic to safe and efficient crosswalks.

## Mitigate Crime and Safety Issues

- Police inclusion in planning for park security plan and parking structure design
- Fire and EMS input regarding stadium's design and safety measures
- Engineering and Traffic Departments review of traffic control measures for both construction and operation of stadium

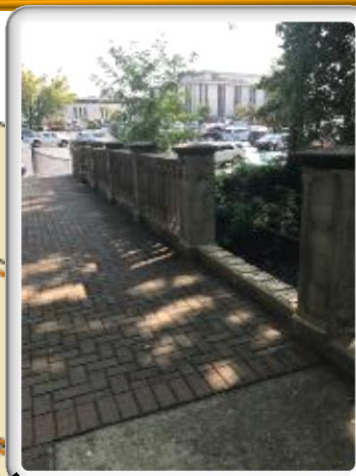
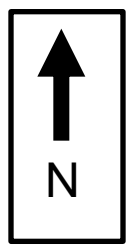




# DOWNTOWN DEVELOPMENT IMPACTS ON SAFETY AND TRAFFIC



Downtown Fayetteville



UNCLASSIFIED



# FAST Transit Center



UNCLASSIFIED





# FAST Transit



**An opportunity for increased interaction and ridership...**



# FAST Transit Recommendations




- Incorporate Park and Ride for large scale events leading up to the opening of the Baseball Stadium:




- Continue to promote existing investments in transit technology:


## Track your bus live!

The TransLoc Rider app puts you in control with real-time tracking so you'll never miss your bus again. Visit [www.TransLocRider.com](http://www.TransLocRider.com)





Get the app!

Powered by 

- Work with the Fort Bragg Garrison to modify Route 19 to serve Womack Army Medical Center and promote Greyhound/Megabus Services provided at the FAST Transit Center





# SKATE PARK DEVELOPMENT IMPACT

---



- Skate Park Impact on Downtown FAY
- Recommendations for Success
- Assessment by Location
- Recommendations / Unexplored Options

# About the Skaters

## *Demographics*

- > 50% are military or military dependents
- Mostly teenagers, but some adults and pre-teens

## *What do they Say?*

- “A skate park will keep us out of trouble”
- “We’ll skate anywhere we won’t get in trouble”
- “Skate park is long over due”
- “City should renovate the old indoor skate park” or “use Rowan park”

## *Where do they go & how?*

- Downtown
- Hope Mills
- “The Mill” at Manna church
- Apex or Elizabethtown
- Abandoned buildings
- Carpool with friends, skate

## *Inner Thoughts, Beliefs, etc.*

- We skate where the skating is best
- High-crime areas are “scary”
- The police target skaters before “real criminals”





# PERCEIVED THEORY OF CHANGE



Fayetteville builds a skate park



Local youth have a productive outlet



Damage to personal & city property and related crime decreases



Skate park encourages tourism, economic development, and community cohesion.





# CONSIDERATIONS



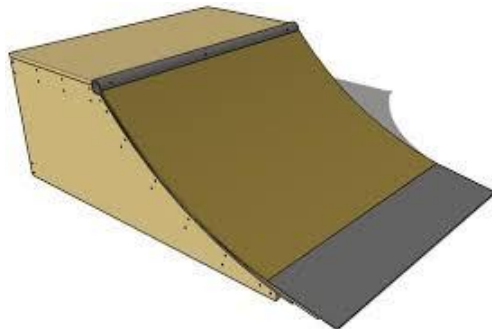
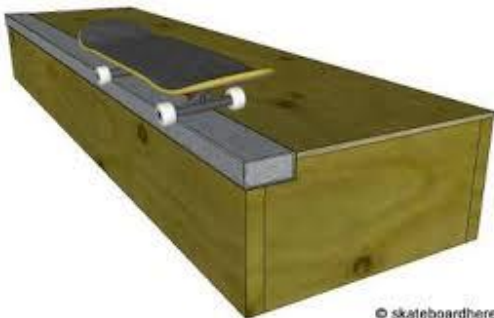
## Recommendations

- Plaza/Street Style
  - skate park style should match local Fayetteville skating style
- 25,000-30,000 sq. ft.

- Lighting
- Free Access
- Visibility
- Parking

## Concerns:

- Security
- Noise in neighborhood
- Crime-prone neighborhoods

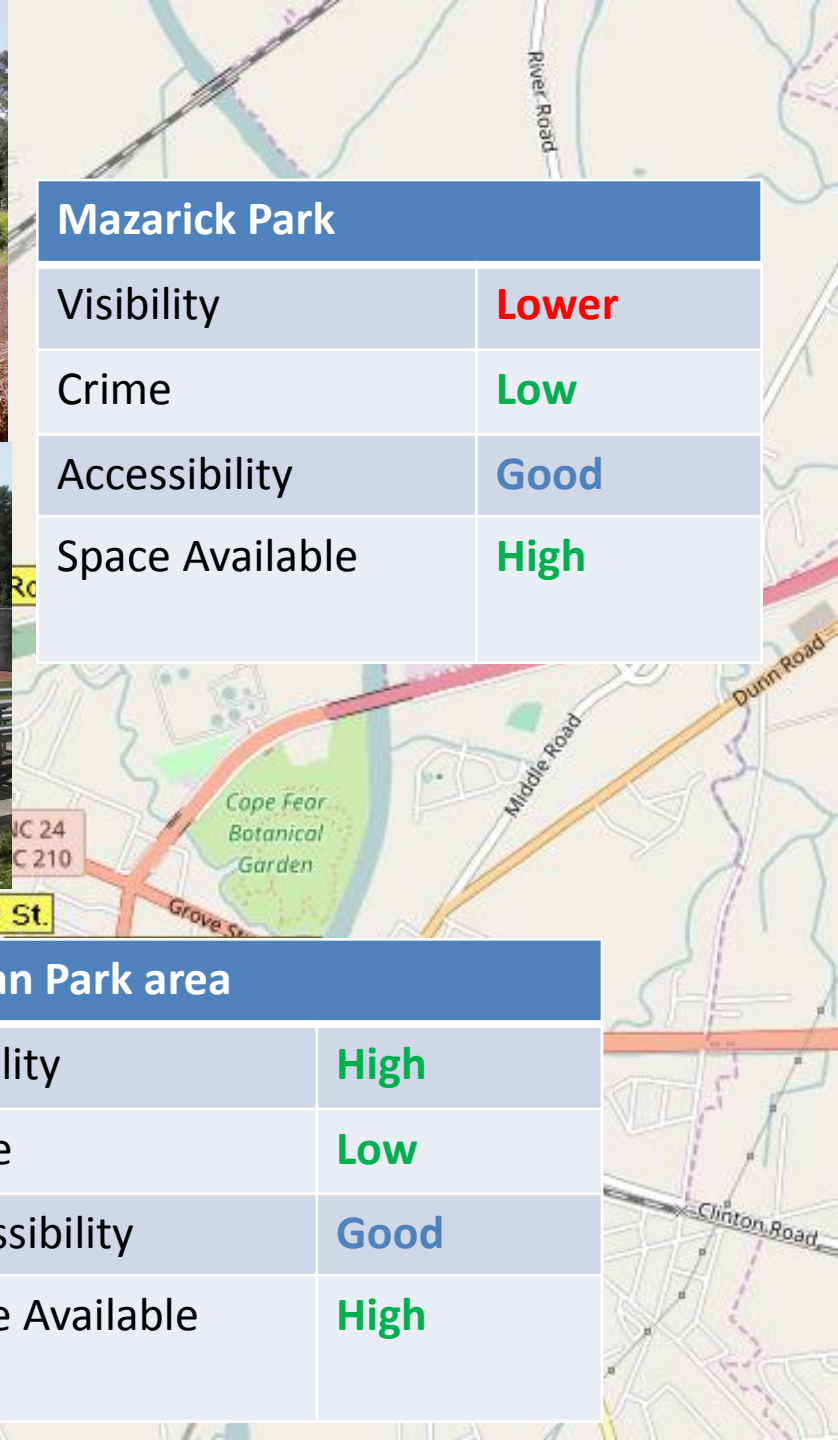






## Mazarick Park

Visibility	<b>Lower</b>
Crime	<b>Low</b>
Accessibility	<b>Good</b>
Space Available	<b>High</b>



## Rowan Park area

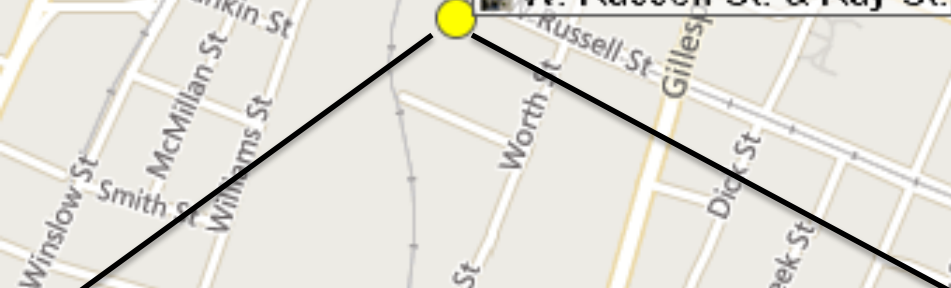
Visibility	<b>High</b>
Crime	<b>Low</b>
Accessibility	<b>Good</b>
Space Available	<b>High</b>



# Gillespie St. & Blount St. etc.

Visibility	<b>Low</b>
Crime	<b>Higher</b>
Accessibility	<b>Good</b>
Space Available	<b>Low</b>

Low water table?



# Downtown

Visibility	<b>High</b>
Crime	
Accessibility	
Space Available	
Cost	





# RECOMMENDATIONS/POSSIBILITIES

---

- Fundraise
  - Locally, Tony Hawk Foundation, Organizations w/ the Olympics
- Involve partners in Skate Park development
  - Friends Of The Skate Parks Foundation Inc.
  - Manna Church
  - Fort Bragg MWR
- Partner with Community Watch organizations to secure park
- Considering budgeting for additional smaller (~\$50,000) neighborhood satellite skate parks





---

*City of*  
**Fayetteville**  
*North Carolina*

# QUESTIONS